

# An Application for an Official Texas Historical Subject Marker<sup>1</sup>

## **Goose Creek School Community No. 9**

Baytown, Harris County, Texas

by Charles “Chuck” Chandler<sup>2</sup>

### **I. CONTEXT**

All Texas Constitutions, from the 1827 Constitution de Coahuila y Tejas to the 1869 Texas Constitution, advocated the importance of education. However, from 1827 to 1876, most Texans considered education as purely a responsibility of parents and had little interest in expending tax money on the education of other people’s children. The 1850 census shows no children in the Goose Creek/Cedar Bayou area to have attended school within the year. In the Compromise of 1850,<sup>3</sup> Texas gave up about half its territory in exchange for 10 million dollars from the Federal government. This allowed the state to pay down its considerable debts and set aside \$2 million as a Special School Fund.<sup>4</sup> This money was heavily invested in railroad stock and the interest from this money was to be distributed to the counties on a per capita basis to fund public education but the last railroad loans were made in 1862 and initially the railroads were not able to pay the annual interest on the loans. More money was siphoned off to build state prisons. The fund did have some positive effect because the 1860 census shows that almost all white children in the Goose Creek/Cedar Bayou area had attended school within the year. The Civil War was particularly devastating to the Special School Fund. In addition to the destabilization of financial institutions, the governor transferred almost \$1.3 million to the military board for war expenses. No funds were drawn for education from 1861 to 1870 and by the end of the war the balance which had been over \$2.5 million in 1861 was worth practically nothing.<sup>5</sup> The Reconstruction Constitution of 1869 called for a uniform system of public free schools for “the gratuitous instruction of all inhabitants between the ages of six and eighteen.” Attendance was made compulsory for four months per year and schools were integrated. The system was to be supported by replenishment of the Special School Fund, which could never again be used for any other purpose. However, in the wake of Reconstruction all of these reforms were extremely unpopular with the white southerners of Texas.<sup>6</sup> They were not enforced and all were replaced in the 1876 Constitution. Only a few school houses had been built in the entire state up to this point and classes were mostly held in churches, barns or whatever building could be found.<sup>7</sup> By 1872, only \$478,820 was left of the original \$2 million.<sup>8</sup>

The 1876 Texas Constitution<sup>9</sup> and the laws which were passed in its wake completely revamped the

education system in Texas and started the state on the path to our present system.<sup>10</sup> This is the constitution still in effect today, although it has been amended many, many times.

## II. OVERVIEW

After the death of her husband, Anson Jones,<sup>11</sup> in 1858, Mary Smith McCrory Jones<sup>12</sup> moved her family to Galveston and then in 1859, to Goose Creek. That same year she purchased her farm called Headquarters from the estate of Henry G. Smith, with Ashbel Smith having Power of Attorney for his brother's affairs.<sup>13</sup> Her children attended the Harmony Grove school, held in the Methodist chapel of the same name<sup>14</sup> which was located on Dr. John L. Bryan's property<sup>15 16</sup> just north of today's Missouri Street on the west bank of Goose Creek.<sup>17</sup> In 1859 the school was taught by Mr. and Mrs. Kemp<sup>18</sup> and from 1863 to 1866 was taught by Rev. C. C. Preston.<sup>19,20</sup>

As early as 1841 school district boundaries were defined by Justice Precinct boundaries. Goose Creek, Lynchburg, and Cedar Bayou were located in Precinct 3 which became School District No. 8.<sup>21</sup> After the Civil War, Thomas Benjamin Gaillard<sup>22</sup> moved his wife and nine children from their home in Adams County, Mississippi to the east bank of Goose Creek. Soon after their arrival in 1867 his daughter, Linna, opened a school for the local children<sup>23</sup> in a two-room cabin located on her family's land, which had been used by Confederate troops garrisoned there during the Civil War.<sup>24</sup> In the 1870 census she was one of three teachers enumerated in Subdivision 35 of Harris County, which consisted of all County land east of the San Jacinto River. Almost all of the white school-age children in the Goose Creek area had attended school within that year.<sup>25</sup>

In 1873, School District No 8 was re-established,<sup>26,27</sup> but in 1876, the constitution and the school law passed that year abolished the existing Common School Districts and established what were called "School Communities".<sup>28</sup> The requirements for a School Community consisted of having a building in which to conduct classes, a list of any number of students between the ages of 8-14, and a board of trustees consisting of three members. School was held four months a year and the school day was of 7 hours duration. Attendance by the students was not compulsory, although attendance was kept in a day book by the teacher as a requirement for her pay, which was based on the number of students in class.

Thirty-five School Communities were established in all of Harris County. The three School Communities in the Baytown area were Cedar Bayou No. 5, Goose Creek No. 9, and Lynchburg No. 24.

Mary Jones' son, Cromwell Anson Jones, was the elected County Judge of Harris County and all the county's schools came under his jurisdiction. Ashbel Smith<sup>29</sup> was appointed as head of the Harris County School Board of School Examiners.<sup>30</sup>

Land for Goose Creek School Community No. 9 was donated by Mary Jones at the request of Thomas Gaillard. In his letter of October 28, 1875, he says,

“Dear Madame, The Public School Committee asked me some time ago to write you and ascertain if you will sell or donate to the State a piece of land out of your corner, next to Mrs. Franck's place on the road to Cedar Bayou. Whereon to build a public school house the Committee say it might be of advantage in the Sale or rent of the net of your place. I have been sick not able to write for more than a month and now have only strength to say “God bless you”. Sincerely Your friend, Thos. B. Gaillard”.<sup>31</sup>

She forwarded the letter to her son, County Judge C. Anson Jones, adding “I thought you had made the Deed asked for within. You had better make it at once. MJ.”<sup>32</sup> because she was preparing to sell the land. For some reason, the deed was not drawn up until 1879 and not filed with the county until 1880.<sup>33</sup> The date of this deed coincides with the date of the deed to David Wiggins and also indicates that the school continued in operation throughout this time.

The 1-1/2 acres of land was located inside the bend of today's junction of West Main and South Main Streets in Baytown.<sup>34</sup> Goose Creek School Community No. 9 was established on November 22, 1876 by Harris County and \$39.90 was granted for the school in which classes had commenced two months earlier.<sup>35</sup> The state constitution allocated \$2.825<sup>36</sup> per student, meaning there were 14 students enrolled in the first class. The petitioners for the application were Gilbert Brooks, T.S. Tabb "and others." Lafayette Jones, Henry F. Gillette,<sup>37</sup> and Jesse Brooks were appointed as trustees. The list of students submitted with the charter application has not survived. However, the 1880 census shows 15 children living near the school, with 8 of them being children of board members or petitioners.

The School Committee was formed before October, 1875<sup>38</sup> and the school house was built before November, 1876.<sup>39</sup> The 1875 Constitution passed with voter approval in February, 1876<sup>40</sup> so plans for the school were already being made before the Constitution took effect. As was common practice at the time, the building would have been built by parents and friends of the community.<sup>41</sup> It was constructed of wood planks and was probably not painted. No pictures are known to exist but the 1943 aerial image

shows it to be about 12 ft x 20 ft.<sup>42</sup> It had a door and windows for light and ventilation. The furniture consisted of two rows of homemade benches and a teacher's desk of crude style. A dry goods box was used for a library. The books, mostly religious, were furnished by Cedar Bayou Methodist Church.<sup>43</sup> The first teacher in this school was Linna Gaillard.<sup>44</sup> Public school teachers were required by law to be certified by the state and her teacher certificate renewal was received by the County in August 1877 so it is likely that she was the teacher for the following year as well.<sup>45</sup> The teacher from 1879 to 1881 was probably Mary Johnson, who was enumerated in June as a Teacher in the 1880 census, living in the home of Ashbel Smith.<sup>46</sup>

The school building also served as a chapel. Dorris Isenhour writes in her memoirs about "attending church services in a tiny schoolhouse across Goose Creek (mainly to meet our beaux) where we sweated out a long and fearful service by an old itinerant preacher."<sup>47</sup>

Among many other changes, the 1884 school law allowed creation of a system of School Districts run by the county. Goose Creek and Cedar Bayou were the only schools in School District 15, which extended between Goose Creek stream and Cedar Bayou north to today's FM-1942 Road. At some point, the old Goose Creek school building was moved to the border of the north edge of David Wiggins' land,<sup>48</sup> just east of today's George Washington Carver Elementary. A 1928 fire at Harris County Department of Education destroyed school records prior to 1888 but surviving records show that from 1888 until 1895 the teachers were Katie Gaillard, Stella McCracken, Annie Langford, Mamie Blackshear, and Clement Appleyard.<sup>49</sup> In 1896 the teacher was Laura Alden.<sup>50</sup> In 1889 Wiggins had sold 59 acres to Jesse Knowlton<sup>51</sup> who subdivided the land and in 1892 sold the tract on which the school stood to Ephraim Taylor.<sup>52</sup> Separate colored and white school trustees had been required by the Texas constitution since the School Act of 1884<sup>53</sup> was enacted and in 1897 Ephraim Taylor, Charles Barrett, and George Gillette were elected as School District 15 Trustees.<sup>54</sup> They were immediate neighbors, all living on tracts of land purchased from Jesse Knowlton and were the only blacks to ever serve as School Trustees in District 15. That year the school became the first colored school in Goose Creek and for the next fourteen years white children had to either be schooled at home<sup>55</sup> or travel several miles to attend classes at Cedar Bayou. Taylor, Barrett, and Gillette were re-elected in 1898<sup>56</sup> and the 1900 census shows five black school age children living in the immediate neighborhood who had attended school within the year. Four of the children were enumerated in the census as being at school.<sup>57</sup> The County

Commissioners records called for colored trustees for each subsequent year through at least 1906 but no colored trustees were elected in District 15 after 1899. The school closed sometime between 1900 and 1904 when Ephraim Taylor sold his land<sup>58</sup> and for the next few years there was no public school in Goose Creek at all.<sup>59</sup> In 1905<sup>60</sup> and 1906<sup>61</sup> most districts in the county, including School District 15, didn't even hold an election for School Trustees, black or white. In the 1910 census, no black children in the neighborhood had attended school within the year and none could read or write.<sup>62</sup> It would be 1921 before a black school was re-established in Goose Creek.<sup>63</sup>

With the discovery of oil in 1908 and the subsequent population explosion, a school was opened at Goose Creek in 1911 to serve the children of white oil field workers. The teacher, Alice Mae Bullard, conducted classes in a tent provided by her father. A more permanent school opened the following year under Erma McMasters<sup>64</sup> and was later taught by Cora Lazenby. By 1916, the student population had outgrown that building<sup>65</sup> and a portable annex was added.<sup>66</sup> The "New Town" of Goose Creek had been developed in 1916 north of the oil field and the "Old School House" was reopened as a school for white children in that community.<sup>67</sup> Gushers, fires, explosions and gas releases in the oil field caused several school closures in the fall of 1916 and forced the oil field school to close in 1917.<sup>68</sup>

The student population of Goose Creek continued to grow to over 400 in 1918<sup>69</sup> and in August, 1919 the old school house was upgraded with plumbing and toilets<sup>70</sup> Roof repairs were made and lighting was installed in October, 1920.<sup>71</sup> By 1921 Goose Creek ISD had at least six grammar schools teaching grades 1-3 spread throughout the Tri-Cities.<sup>72</sup> Grades 4-6 attended classes at "The Barn"<sup>73 74</sup> and grades 7-11 attended classes at the YMCA.<sup>75</sup> The school population in 1922 was up to 1200 and twenty-eight teachers were employed by the school district.<sup>76</sup>

With the passage of the \$200,000 school bond in 1922 and opening of new school buildings in 1923,<sup>77 78</sup> the Old School House had finally outlived its usefulness and was closed for good. After its service as a school was over, the building still existed as a storage shed or barn until at least 1966.<sup>79</sup> It was located in a pasture on High Street near Anson Jones Elementary and children walking home from school considered it a "haunted house". It became a "double-dog-dare" to go inside.<sup>80</sup> According to historical aerial photographic images, the building was gone by 1973.

In February, 1908, R. D. Smith and John Ilfrey, Trustees of School District No 15 had petitioned the Harris County Commissioners Court for sale of the 1-1/2 acres of land which Mary Jones had donated.<sup>81</sup> The petition was filed but no action on the land was taken until 1926, when Harris County transferred the land to the Goose Creek Independent School District (GCISD).<sup>82</sup> In 1928, the state gave permission for the school district to sell the land to raise funds for purchase of new school land, so the 1-1/2 acres was sold to the Tyrell-Garth Investment Company.<sup>83</sup> Part of it became the road bed for the West Main – South Main junction. In 1931 the property was subdivided and sold in parcels.<sup>84</sup> Today there is a house, a church, an empty building, and a business on the land but the only part of the original 1-1/2 acres is still in public use is the road bed and traffic island in the Pelly area of Baytown.<sup>85</sup>

The Goose Creek area today is served by the Goose Creek Consolidated Independent School District (GCCISD) headquartered in Baytown, Texas.<sup>86</sup> The district serves all of Baytown and Highlands, Coady, McNair, and outlying areas of East Harris County, as well as a portion of West Chambers County. Currently, the district has 14 elementary schools (K-5), 5 junior high schools (6-8), 4 high schools (9-12), a career center, and two alternative centers for education.<sup>87</sup>

### **III. SIGNIFICANCE**

Goose Creek School Community No. 9 was the first school in present day Baytown built on land designated as school property. In 1876 Mary Smith McCrory Jones, the widow of the last President of Texas and future first President of the Daughters of the Republic of Texas, donated one and a half acres of her farm to Harris County on which to build a public school. The request for the donation came from Thomas Gaillard, her neighbor and owner of the land which would eventually become the Goose Creek Oil Field. Her youngest son, Harris County Judge Cromwell Anson Jones (1850-1888), also had jurisdiction over all the schools in Harris County. He grew up in today's Pelly area and in the 1860s had attended school at the Harmony Grove church building, located near Goose Creek stream. Ashbel Smith, physician, diplomat, official of the Republic of Texas, first President of the Board of Regents of the University of Texas, and owner of nearby Evergreen Plantation, served as Chairman of the County Board of School Examiners.

The school house was built and paid for by parents and friends of the 14 students between the ages of 8-14 who were enrolled in the first class. It was a tiny wooden plank building, about 12' x 20' in size. The

furniture consisted of two rows of homemade benches and a teacher's desk of crude style. A dry goods box was used for a library. The books, mostly religious, were furnished by Cedar Bayou Methodist Church. The first teacher in this school was Thomas Gaillard's daughter, Linna. Classes were conducted in the building at this location until 1884, when it was moved about a half mile north to land just behind the existing George Washington Carver School. At some point, classes stopped but resumed in 1888 with Linna's sister, Katie Gaillard, as the teacher. The school continued for several years under the instruction of Stella McCracken, Annie Langford, Mamie Blackshear, Clement Appleyard, and Laura Alden. From 1897 until after 1900 the school served as the first public school for Black children in Goose Creek.

The influx of oil field and refinery workers and their families due to the discovery of oil drove the student population from about 30 in 1916 to 400 in 1918 to more than 1200 in 1922. The old school house underwent repairs and upgrades during this time and other buildings were rented and built in which to conduct classes. In 1922 a \$200,000 school bond election passed and with the opening of several new schools in 1923, the old school house had finally outlived its usefulness and its school bell rang for the last time.

#### **IV. DOCUMENTATION**

*The Development of Education in Texas* © 1925, by Frederick Eby, Ph.D., LL.D., Professor of the History of Education, The University of Texas (The McMillan Company).

<https://archive.org/details/developmentofedu00ebyf>

*The Story of Texas Schools* © 1955, by C.E. Evans, President Emeritus, Southwest Texas State Teachers College (The Steck Company, Austin).

*The Texas Almanac for 1873, and Emigrant's Guide to Texas, book, 1873;*  
([texashistory.unt.edu/ark:/67531/metapht123778/](http://texashistory.unt.edu/ark:/67531/metapht123778/); accessed August 25, 2018), University of North Texas Libraries, The Portal to Texas History, [texashistory.unt.edu](http://texashistory.unt.edu); crediting Texas State Historical Association.

*The New Encyclopedia of Texas.* © 1924; 2 vols. Revised Edition edited by Ellis Arthur Davis (Texas Historical Society.)

*The History of Baytown* by Margaret Swett Henson. (Bay Area Heritage Society, Baytown, Texas; 1985.)

*Harris County, Texas. East of the San Jacinto River, A tapestry of local Historical Information: Highlands – Lynchburg Area – Baytown – Goose Creek – Pelly – Crosby – Huffman and more* by Vern E. Miller; (Highlands, Texas; Privately published 2001).

A Social History of Baytown, Texas 1912-1956 by Olga Miller Haenel. (Austin, Texas. The University of Texas, January 1958. Thesis for Degree of Master of Arts).

*Suffer the Children: A History of the Confederate Orphanage at Bayland, Harris County, Texas 1867 to May 1918* by Trevia Wooster Beverly. (Houston, Texas: Tejas Publications & Research, 1985.)

*Goose Creek Gasser*, One of the Baytown area's first newspapers, a forerunner of the present-day Baytown Sun, Edward Herman Bell and other investors, including Hugh Echols, Jr. (1898-1964), Clarence Fortinberry (1891-1975), and Bell's brother-in-law, William McCree Bonds (1882-1949), bought the *Goose Creek Gasser* from Boyer in December 1924. The new owners changed the name of the publication to the *Semi-Weekly Tribune*, published by the Tribune Printing Company Inc. on Tuesdays and Fridays, with the slogan, "A Landlocked Harbor Where the Ship Channel Meets the Sea." <http://www.baytownhistory.org/images/BaytownSunMarkerApp.pdf>

Harris County Archives, 11525 Todd Street, Suite 300, Houston, TX 77055. Diane Trautman, Harris County Commissioner Clerk, Sarah Canby Jackson, CA, <http://www.cclerk.hctx.net/>

*Minutes of the School Board Meetings, 1919-1923*, Goose Creek Consolidated Independent School District, 4544 Interstate 10 East, Baytown, Texas 77521. 281.420.4800. Mailing Address: P.O. Box 30, Baytown, Texas 77522. GCCISD webpage: <http://www.gccisd.net/>

---

<sup>1</sup> Sponsored by the Baytown Historical Preservation Association. 5117 North Main Street, P.O. Box 1244, Baytown, Texas 77522-1244. (281)421-2099 [info@baytownhistory.org](mailto:info@baytownhistory.org) <http://www.baytownhistory.org/>

<sup>2</sup> Vice President, Baytown Historical Preservation Association, assisted by Trevia Wooster Beverly, Harris County Historical Commission (1995- ) and Chairman of the Advisory Council for the Baytown Historical Preservation Association.

<sup>3</sup> Texas received \$10 million in exchange for ceding to the national government all land north and west of a boundary beginning at the 100th meridian where it intersects the parallel of 36°30', then running west along that parallel to the 103d meridian, south to the 32d parallel, and from that point west to the Rio Grande. The bill had the support of the Texas delegation and of moderate leaders in both the North and South. Though there was some opposition in Texas to accepting the proffered settlement, voters at a special election approved it by a margin of three to one. *Handbook of Texas Online*, Roger A. Griffin, "COMPROMISE OF 1850," accessed September 16, 2018, <http://www.tshaonline.org/handbook/online/articles/nbc02>.

<sup>4</sup> The Special School Fund was the predecessor of the Permanent School Fund which was funded in the 1876 Constitution. <https://tshaonline.org/handbook/online/articles/khp01>

<sup>5</sup> *The Development of Education in Texas* © 1925, by Frederick Eby, Ph.D., LL.D., Professor of the History of Education, The University of Texas (The McMillan Company). Page 151.

<sup>6</sup> *The Development of Education in Texas* © 1925, by Frederick Eby, Ph.D., LL.D., Professor of the History of Education, The University of Texas (The McMillan Company). Page 162.

<sup>7</sup> *Handbook of Texas Online*, Max Berger and Lee Wilborn, "EDUCATION," accessed September 16, 2018. <https://tshaonline.org/handbook/online/articles/khe01>



---

<sup>8</sup> *The Development of Education in Texas* © 1925, by Frederick Eby, Ph.D., LL.D., Professor of the History of Education, The University of Texas (The McMillan Company). Page 165.

<sup>9</sup> “The Constitution of 1876 is the sixth constitution by which Texas has been governed since independence from Mexico was achieved in 1836. It was framed by the Constitutional Convention of 1875 and adopted on February 15, 1876, by a vote of 136,606 to 56,652, and it remains the basic organic law of Texas.” *Handbook of Texas Online*, Joe E. Ericson and Ernest Wallace, "Constitution of 1876," accessed December 08, 2017. <http://www.tshaonline.org/handbook/online/articles/mhc07>

<sup>10</sup> “The Constitution of 1876 is the sixth constitution by which Texas has been governed since independence from Mexico was achieved in 1836. It was framed by the Constitutional Convention of 1875 and adopted on February 15, 1876, by a vote of 136,606 to 56,652, and it remains the basic organic law of Texas.” *Handbook of Texas Online*, Joe E. Ericson and Ernest Wallace, "Constitution of 1876," accessed December 08, 2017. <http://www.tshaonline.org/handbook/online/articles/mhc07>

<sup>11</sup> Anson Jones (January 20, 1798 – January 9, 1858) was a doctor, businessperson, member of Congress, and the fourth and last President of the Republic of Texas, sometimes called the "Architect of Annexation". <https://tshaonline.org/handbook/online/articles/fjo42>

<sup>12</sup> Mary Smith Jones (1819–1907) was the last First Lady of the Republic of Texas, as wife of Anson Jones, the last president of the Republic. She was the first president of the newly founded Daughters of the Republic of Texas in 1891. <https://tshaonline.org/handbook/online/articles/fjo93>

<sup>13</sup> *Harris County Deed Book*, Volume V, Page 418, Ashbel Smith to Mary Jones. County Clerk’s Office Records, Diane Trautman, Harris County Clerk. Appendix p 1.

<sup>14</sup> *The Houston Post*. (Houston, Tex.), Vol. 23, No. 6, Ed. 1 Wednesday, January 1, 1908 Page: 10 of 15. “Mrs. Mary Anson Jones is Dead.” Appendix page 2. <https://texashistory.unt.edu/ark:/67531/metapth443369/m1/10/?q=jones>

<sup>15</sup> When John Bryan died in 1867 the last of the family property to be sold was the 25-acre homestead north of the road at the east end of today’s Missouri Street. *Harris County Deed Book*, Volume 011, Page 068, Mary Ann Bryan to H. F. Gillette et al. County Clerk’s Office Records, Diane Trautman, Harris County Clerk.

<sup>16</sup> “After Bryan died, ... Gillette moved the old chapel from Harmony Grove to the orphanage.” *The History of Baytown* by Margaret Swett Henson. Page 57. (Bay Area Heritage Society, Baytown, Texas; 1985.)

<sup>17</sup> When the road from Lynchburg to Shearn (today’s Cedar Bayou) was laid out the County Commissioners used the Harmony Grove school house as a landmark. The route is states “...on the north side of Mrs Lang’s prairie field nearly direct to the Goose Creek Crossing near Harmony Grove School House, Thence along Mrs. Anson Jones’ road to her north gate, thence nearly direct to Shearn on Cedar Bayou.” *Harris County Commissioners Court Minutes*, August 19, 1861. Volume B, Page 008. County Clerk’s Office Records, Diane Trautman, Harris County Clerk.

<sup>18</sup> *The Weekly Telegraph* (Houston, Tex.), Vol. 25, No. 10, Ed. 1 Wednesday, May 25, 1859 Page: 1 of 4. “Letter from Ashbel Smith”. <https://texashistory.unt.edu/ark:/67531/metapth236043/m1/1/?q=kemp>

<sup>19</sup> *The Houston Post*. (Houston, Tex.), Vol. 23, Ed. 1 Monday, September 2, 1907 Page: 36 of 68. “DePelchin Faith Home, Bayland Orphan Home”. <https://texashistory.unt.edu/ark:/67531/metapth602686/m1/36/?q=preston>

<sup>20</sup> Bayland High School under C.C. Preston began its third year in 1865. The school for neighborhood children opened shortly after the high school opened in 1863. (Endnote 15).

<https://texashistory.unt.edu/ark:/67531/metapth232772/m1/4/?q=bayland>

<sup>21</sup> *Telegraph and Texas Register* (Houston, Tex.), Vol. 6, No. 45, Ed. 1, Wednesday, October 6, 1841 Page: 2 of 4. <https://texashistory.unt.edu/ark:/67531/metapth48154/m1/2/?q=school>

<sup>22</sup> Abstracted from *The New Encyclopedia of Texas*. Graduate of Harvard Law School, class of 1846, who came to Goose Creek in 1868, bringing with him some of his former slaves, and wife, Mary Martha Foster Gaillard, a native of Bolling Green, Kentucky. Coming by boat from Natchez, Mississippi to New Orleans on the steamboat "Wild Wagon" and then went to Morgan City [Louisiana] by railroad. From there by boat to Galveston and Hog Island [Goose Creek].

<sup>23</sup> *Goose Creek Semi Weekly Tribune*, (Goose Creek, Texas), Vol 7, No 29, May 12, 1925, p5. Appendix, p 4.

<sup>24</sup> Ibid

- 
- <sup>25</sup> *US Census, 1870*, Harris Co, TX, Pct. 3, ED 78. Page No. 9 (stamped pg. 492) Subdivision No. 35, enumerated 22nd day of Sept. 1870, Post Office, Cedar Bayou, Reel 1589. <https://archive.org/stream/populationschedu1589unit#page/n281>
- <sup>26</sup> *The Houston Telegraph* (Houston, Tex.), Vol. 39, No. 17, Ed. 1 Thursday, August 28, 1873 Page: 7 of 8. "School Districts of Harris County". <https://texashistory.unt.edu/ark:/67531/metaph235054/m1/7/?q=%22school%20districts%22>
- <sup>27</sup> *The Houston Telegraph* (Houston, Tex.), Vol. 39, No. 16, Ed. 1 Thursday, August 21, 1873 Page: 8 of 8. "Election Precincts". <https://texashistory.unt.edu/ark:/67531/metaph235053/m1/8/?q=precinct>
- <sup>28</sup> Gammel, Hans Peter Marcus Neilsen. *The Laws of Texas, 1822-1897 Volume 8, book, 1898*; Austin, Texas. accessed August 26, 2018, University of North Texas Libraries, The Portal to Texas History. <https://texashistory.unt.edu/ark:/67531/metaph6731/m1/1043/>
- <sup>29</sup> Ashbel Smith (August 13, 1805 – January 21, 1886) was a pioneer physician, diplomat and official of the Republic of Texas, Confederate officer and first President of the Board of Regents of the University of Texas. Appendix, p 7. <https://tshaonline.org/handbook/online/articles/fsm04>
- <sup>30</sup> *Director's School Record for Harris County*, Prepared by O. N. Hollingsworth, Superintendent of Public Instruction. Galveston, Texas 1876. <http://www.harriscountyarchives.com/Portals/1/Documents/Pathfinders/SchoolrecordsPt1.pdf>  
<http://www.harriscountyarchives.com/Portals/1/Documents/Pathfinders/SchoolrecordsPt2.pdf>  
<http://www.harriscountyarchives.com/Portals/1/Documents/Pathfinders/SchoolrecordsPt3.pdf>
- <sup>31</sup> Jones, Mary Smith (1819-1907). *Letter from Mary Jones to Cromwell Anson Jones, October 28, 1875 - Page 1*. October 28, 1875. Special Collections, University of Houston Libraries. University of Houston Digital Library. Web. September 5, 2017. <http://digital.lib.uh.edu/collection/p15195coll9/item/313/show/311>
- <sup>32</sup> Jones, Mary Smith (1819-1907). *Letter from Mary Jones to Cromwell Anson Jones, October 28, 1875 - Page 2*. October 28, 1875. Special Collections, University of Houston Libraries. University of Houston Digital Library. Web. September 5, 2017. This reply is on the reverse side of end note 31. <http://digital.lib.uh.edu/collection/p15195coll9/item/313/show/312>
- <sup>33</sup> Although the School land deed was filed May 4, 1880 the Date if Instrument was January 18, 1879, two days before the Date of Instrument of the deed selling the rest of her land to David Wiggins. The Wiggins deed mentions the school land and the existence of the school in 1876, as well as her comment to her son that she "thought he had already filed it" indicates her intention of donating the land in 1876.
- <sup>34</sup> Harris County Deed Book, Vol 20, page 482, Mary Jones to C.A. Jones. County Clerk's Office Records, Diane Trautman, Harris County Clerk.
- <sup>35</sup> *Director's School Record for Harris County*, Prepared by O. N. Hollingsworth, Superintendent of Public Instruction. Galveston, Texas 1876. Appendix, p 9. <http://www.harriscountyarchives.com/Portals/1/Documents/Pathfinders/SchoolrecordsPt2.pdf>
- <sup>36</sup> *Director's School Record for Harris County*, Prepared by O. N. Hollingsworth, Superintendent of Public Instruction. Galveston, Texas 1876. Circular No. 2. <http://www.harriscountyarchives.com/Portals/1/Documents/Pathfinders/SchoolrecordsPt3.pdf>
- <sup>37</sup> In 1866 Gillette was one of a group of men who met in Houston and laid plans for establishing an orphans' home. When, on January 15, 1867, the board of trustees was organized, he was elected superintendent of Bayland Orphans' Home, which he served as manager for fifteen years. After severing his connection with the institution, Gillette spent his declining days at Bell Prairie, where he died on April 25, 1896. <https://tshaonline.org/handbook/online/articles/fgi29>
- <sup>38</sup> Jones, Mary Smith (1819-1907). *Letter from Mary Jones to Cromwell Anson Jones, October 28, 1875 - Page 1*. October 28, 1875. Special Collections, University of Houston Libraries. University of Houston Digital Library. Web. September 5, 2017.
- <sup>39</sup> *Director's School Record for Harris County*, Prepared by O. N. Hollingsworth, Superintendent of Public Instruction. Galveston, Texas 1876. <http://www.harriscountyarchives.com/Portals/1/Documents/Pathfinders/SchoolrecordsPt2.pdf>
- <sup>40</sup> *Handbook of Texas Online*, Ralph W. Steen, "CONSTITUTIONAL CONVENTION OF 1875," accessed September 28, 2018. <http://www.tshaonline.org/handbook/online/articles/mjc05>

- 
- <sup>41</sup> Gammel, Hans Peter Marcus Neilsen. *The Laws of Texas, 1822-1897 Volume 8*, Page: 1,045, book, 1898; Austin, Texas. (texashistory.unt.edu/ark:/67531/metaph6731/m1/1046/: accessed February 28, 2019), University of North Texas Libraries, The Portal to Texas History, texashistory.unt.edu; .
- <sup>42</sup> “Goose Creek School House.” 29°43.731’N and 94°58.274’W. Google Earth. Imagery Date: Dec 31, 1943. Accessed November 12, 2017. Appendix, p26.
- <sup>43</sup> *The Baytown Sun* (Baytown, Tex.), Vol. 45, No. 217, Ed. 1 Monday, March 4, 1968 Page: 6 of 15. “Area’s Early Day Schools,” by Mrs. Bonnie Hazel Martin. <https://texashistory.unt.edu/ark:/67531/metaph1062103/m1/6/>
- <sup>44</sup> *Goose Creek Semi Weekly Tribune*, (Goose Creek, Texas), Vol 7, No 29, May 12, 1925, p5. Appendix, p 4.
- <sup>45</sup> Director's School Record for Harris County, Prepared by O. N. Hollingsworth, Superintendent of Public Instruction. Galveston, Texas 1876. Appendix, p 8.  
<http://www.harriscountyarchives.com/Portals/1/Documents/Pathfinders/SchoolrecordsPt1.pdf>
- <sup>46</sup> *US Census, 1880*, Harris Co, TX, ED 78. Page No. 20. enumerated 9th day of Jun. 1880, Post Office, Lynchburg, Reel 1309. <https://archive.org/stream/10thcensus1309unit#page/n257>
- <sup>47</sup> Unpublished Memoirs of Dorris Isenhour Peterson (1882-1979); being edited for publication by the Baytown Historical Preservation Association.
- <sup>48</sup> *Goose Creek Semi Weekly Tribune*, (Goose Creek, Texas), Vol 7, No 29, May 12, 1925, p5. United States Geological Survey, 1920, *Morgan Point Quadrangle Map USGS Quadrangle map*, Texas (Harris County).  
[http://historicalmaps.arcgis.com/usgs/](http://historicalmaps.arcgis.com/usgs/United States Geological Survey, 1920, Morgan Point Quadrangle Map SGS Quadrangle map, Texas (Harris County).)
- <sup>49</sup> *School Ledger*, Harris County School Records 1889-1894, Location 1030-A-03. *School Ledger*, Harris County School Records 1894-1895, Location 1030-A-03. Appendix, pp 14-16.  
[http://www.harriscountyarchives.com/Portals/1/Documents/Pathfinders/Pathfinder\\_Schools.pdf](http://www.harriscountyarchives.com/Portals/1/Documents/Pathfinders/Pathfinder_Schools.pdf)
- <sup>50</sup> *The Houston Daily Post*. (Houston, Tex.), Vol. 13th year, No. 224, Ed. 1, Sunday, November 14, 1897 Page: 25, Col 6. “Letter from Katie Scoregga, Cedar Bayou Post Office”.  
<https://texashistory.unt.edu/ark:/67531/metaph84336/m1/25/?q=%22cedar%20bayou%22>
- <sup>51</sup> *Harris County Deed Book*, Volume 68, Page 449, David Wiggins to Jesse Knowlton. County Clerk’s Office Records, Diane Trautman, Harris County Clerk. Appendix p 1.
- <sup>52</sup> *Harris County Deed Book*, Volume 63, Page 389, Jesse Knowlton to Ephraim Taylor. County Clerk’s Office Records, Diane Trautman, Harris County Clerk.
- <sup>53</sup> The School Act of 1884 provided for three white school trustees and three colored school trustees elected for the management and control of their respective schools. The colored schools were to be established “upon the written application of ten colored residents of said district having one or more children within the scholastic age”. Gammel, Hans Peter Marcus Neilsen. *The Laws of Texas, 1822-1897 Volume 9*, Page: 583, book, 1898; Austin, Texas. (texashistory.unt.edu/ark:/67531/metaph6729/m1/585/?q=%22colored%20trustees%22: accessed February 28, 2019), University of North Texas Libraries, The Portal to Texas History, texashistory.unt.edu; .
- <sup>54</sup> *The Galveston Daily News*. (Galveston, Tex.), Vol. 56, No. 83, Ed. 1 Tuesday, June 15, 1897 Page 3 of 8. Harris County Commissioners Court Minutes”. <https://texashistory.unt.edu/ark:/67531/metaph442289/m1/3/?q=eph+taylor>
- <sup>55</sup> *The Houston Post*. (Houston, Tex.), Vol. 23, Ed. 1 Sunday, October 13, 1907 Page: 57, Col 4. Letter from a Texan Hap in Goose Creek, Cedar Bayou Post Office. <https://texashistory.unt.edu/ark:/67531/metaph602576/m1/57/?q=cedar%20bayou>
- <sup>56</sup> Harris County Commissioners Court Minutes, Tuesday, June 14, 1898, Volume H, Page 513. County Clerk’s Office Records, Diane Trautman, Harris County Clerk.
- <sup>57</sup> US Census, 1900, Harris Co, TX, Pct. 3, ED 97. Sheet No 3, enumerated 5th day of June 1900, Reel 1642.  
<https://archive.org/details/12thcensusofpopu1642unit/page/n1051>
- <sup>58</sup> *Harris County Deed Book*, Volume 167, Page 188, Ephraim Smith to Will Powars. County Clerk’s Office Records, Diane Trautman, Harris County Clerk.

- 
- <sup>59</sup> The Houston Post. (Houston, Tex.), Vol. 20, No. 165, Ed. 1 Friday, September 16, 1904 Page: 5 of 12. County School Teachers. <https://texashistory.unt.edu/ark:/67531/metaph602814/m1/5/?q=%22County%20schools%22>
- <sup>60</sup> Harris County Commissioners Court Minutes, Monday, April 10, 1905, Volume M, Page 162. County Clerk's Office Records, Diane Trautman, Harris County Clerk.
- <sup>61</sup> The Houston Post. (Houston, Tex.), Vol. 20, No. 8, Ed. 1 Wednesday, April 13, 1904 Page 4 of 12. School Trustee Elections. <https://texashistory.unt.edu/ark:/67531/metaph602922/m1/4/?q=%22school%20trustee%22%20elections>
- <sup>62</sup> US Census, 1910, Harris Co, TX, Pct. 3, ED 112. Sheet No 15B, enumerated 6th day of May 1910.
- <sup>63</sup> The first Colored school in Goose Creek ISD was "the Old Anderson School" which opened in 1921 with Tilly Brown as a teacher. The GCISD Minutes books show no Colored teachers employed by GCISD in 1919 or 1920. The 1920 census shows several black children in the neighborhood to have attended school within the year, but all those families rented and were employed in the oil drilling business, a highly transient population. The July 20, 1920 GCISD Minutes show that the Board approved renting and repairing the Anderson Grocery Store for school purposes. The Dec 22, 1920 GCISD Minutes has an entry approving payment for labor on the Colored School and the Sept 1, 1921 GCISD Board Minutes confirms Tillie Brown employed as a teacher.
- The Baytown Sun (Baytown, Tex.), Vol. 33, No. 99, Ed. 1 Monday, September 29, 1952 Page 46 of 96. "Davis is Principle of Colored Schools". <https://texashistory.unt.edu/ark:/67531/metaph1041805/m1/46/?q=colored%20unit>
- <sup>64</sup> The Baytown Sun (Baytown, Tex.), Vol. 53, No. 197, Ed. 1 Sunday, June 1, 1975 Page: 1 of 20. "First City Teacher Recalls How it was in 1911". <https://texashistory.unt.edu/ark:/67531/metaph1104545/m1/1/?q=alice>
- <sup>65</sup> The Houston Post. (Houston, Tex.), Vol. 31, No. 170, Ed. 1 Thursday, September 21, 1916 Page: 9 of 16. "School Officials are Up a Tree". <https://texashistory.unt.edu/ark:/67531/metaph610176/m1/9/?q=attendance>
- <sup>66</sup> The Houston Post. (Houston, Tex.), Vol. 31, No. 171, Ed. 1 Friday, September 22, 1916 Page: 14. "Portable School Building Annex". <https://texashistory.unt.edu/ark:/67531/metaph608381/m1/14/?q=portable>
- <sup>67</sup> United States Geological Survey, 1920, *Morgan Point Quadrangle Map USGS Quadrangle map*, Texas (Harris County). From the 1916 survey. <http://historicalmaps.arcgis.com/usgs/>
- <sup>68</sup> The Houston Post. (Houston, Tex.), Vol. 31, No. 313, Ed. 1 Sunday, February 11, 1917 Page: 10 of 50. Big Gasser Gave Kiddies Vacation". <https://texashistory.unt.edu/ark:/67531/metaph609133/m1/10/?q=gasser>
- <sup>69</sup> *The Houston Post*. (Houston, Tex.), Vol. 34, No. 171, Ed. 1 Sunday, September 22, 1918 Page: 38 of 55. "Heavy Enrolment at Goose Creek School". <https://texashistory.unt.edu/ark:/67531/metaph608144/m1/38/?q=goose%20creek>
- <sup>70</sup> *Goose Creek ISD, Minutes of the School Board Meetings, 1919-1920*, August 15, 1919.
- <sup>71</sup> *Goose Creek ISD, Minutes of the School Board Meetings, 1919-1920*, October 29, 1920.
- <sup>72</sup> Grammar schools were established in an old blacksmith shop at Evergreen in 1919, at Anderson's Grocery Store (Middle Town) in Jul, 1920, at Faulkner Building (Middle Town), at Derrick Store Oct 29, 1920, and the Methodist Church (Middle Town) July 18, 1921. A two-room school house was also approved for Middle Town in Jul, 1921. *Goose Creek ISD, Minutes of the School Board Meetings, 1919-1920*, see dates as listed.
- <sup>73</sup> *Goose Creek Gasser*. Goose Creek Texas, September 10, 1921, Volume 3, Number 32, page 1.
- <sup>74</sup> A 6-room former oil field bunkhouse was donated by Ross Sterling and converted to use as a school. It came to be known as "The Old Barn" and was located at the corner of Commerce and Sterling Streets in present day Baytown. "Five grades were still meeting in "the barn" during the 1922-23 school year while they were waiting for the completion of the new Anson Jones Elementary School. Teachers were Miss Virginia Cook, Miss Edna DeWitt, and Mrs. Smith for the first grade; Miss Mary L. Stewart and Miss Fannie Terrell, second, Mrs. J. F. Crawford and Miss Nan Webb, third, Misses Irene Brooks, Susan Dobbs, and John Edna Palmer for the fourth grade, and Miss Elizabeth Martin, Mr. Finis Lowe, and Mr. Long for the fifth grades. Later, in 1922, teachers were required to be "At least twenty years old, no bobbed hair, and a first-class certificate." *Reading, 'riting, 'rithmetic ... A Brief History of Education in Harris County, Texas*; 2015 MSS. By Trevia Wooster Beverly.
- <sup>75</sup> *Goose Creek Gasser*. Goose Creek Texas, September 10, 1921, Volume 3, Number 32, page 1
- <sup>76</sup> *Goose Creek ISD, Minutes of the School Board Meetings, 1919-1922*, September 1, 1921.

---

<sup>77</sup> *The Houston Post* (Houston, Tex.), Vol. 40, No. 12, Ed. 1 Wednesday, April 16, 1924 Page: 1. “New School Head is Native Texan”.

<https://texashistory.unt.edu/ark:/67531/metaph609469/m1/1/?q=%22goose%20creek%20independent%20school%20district%22>

<sup>78</sup> *Goose Creek ISD, Minutes of the School Board Meetings, 1919-1922*, February 8, 1922.

<sup>79</sup> “Goose Creek School House.” 29°43'43.92"N and 94°58'16.26"W. HistoricAerials. 1966. Accessed Aug 27, 2018.

<https://www.historicaerials.com/viewer>

<sup>80</sup> Childhood memories of Chuck Chandler and George Edwards.

<sup>81</sup> Harris County Commissioners Court Minutes Book, Vol O, page 126, February 13, 1908.

<sup>82</sup> Harris County to GCISD, 1926, Harris County, Texas Deed Book Vol 676, p693 et seq. Appendix, p 20-21.

<sup>83</sup> GCISD to Tyrell-Garth Investment Co, 1928, Harris County, Texas Deed Book Vol 773, p460 et seq.

<sup>84</sup> Tyrell-Garth Investment Co to B. Hunter, 1931, Harris County, Texas. *Harris County Deed Book*, Volume V, Page 418, Ashbel Smith to Mary Jones. County Clerk’s Office Records, Diane Trautman, Harris County Clerk. Book Vol 855, p219 et seq. Appendix, p 22-25.

<sup>85</sup> Appendix, p 27-28.

<sup>86</sup> 4544 Interstate 10 East, Baytown, Texas 77521. 281.420.4800. Mailing Address: P.O. Box 30, Baytown, Texas 77522.

GCCISD webpage: <http://www.gccisd.net/>

<sup>87</sup> Goose Creek Consolidated Independent School District, Wikipedia (accessed December 9, 2017).

[https://en.wikipedia.org/wiki/Goose\\_Creek\\_Consolidated\\_Independent\\_School\\_District](https://en.wikipedia.org/wiki/Goose_Creek_Consolidated_Independent_School_District)

V. APPENDIX

G. Smith  
by atty  
to  
Mary Jones

County of Harris State of Texas May 21 1859 know all men by these presents that Ashbel Smith of the county and state above written in virtue of a Power of Attorney executed to me on the day of by Henry G Smith of the city of Memphis and state of Tennessee and acting in pursuance of instructions from said Henry G Smith and for the consideration of the sum of sixteen hundred dollars which has been paid to said Henry G Smith by Mrs Mary Jones now of the county of Harris and state of Texas have sold conveyed and delivered and by these presents do sell convey and deliver to the said Mary Jones the tract of land known as Head Quarters situated on the banks of Goose Creek in the county of Harris and bounded as follows Beginning at a stake at the mouth of a gully on the east bank of Goose Creek about 60 varas above the west boundary line of the Whiting League thence running up said gully to its head and continuing its same general course which is S 24° E to a stake in an old road that is 200 varas distant from the beginning - thence S 62° E 826 varas thence east 810 varas to

419




the west boundary line of the Scott League thence along said boundary line S 22° W 1915 varas thence N 69° W 1000 varas to a stake in a hickory grove thence North 1510 varas thence west 737 varas to Goose Creek thence up said creek to the place of beginning containing 460 acres more or less To have and to hold the said land with all and singular the improvements thereon to the said Mary Jones her heirs and assigns forever And the title to said land is hereby warranted and defended against all persons whatsoever In witness whereof I have hereunto set my hand and seal at the place and date above written Ashbel Smith Attorney for Henry G Smith seal. witnesses Julia C Woodruff Saml E Jones the State of Texas County of Harris Before me J R Dart clerk of the County Court of Harris County this day came Ashbel Smith of said county to me well known who as the agent & attorney in fact for Henry G Smith acknowledges the execution of the foregoing deed dated May 21 1859 for the purposes & consideration therein set forth & contained - Witness my hand & seal of Harris County Court at office in Houston June 11 1859 J R Dart clk seal  
- Recorded June 11 1859 at 7 o'clock P.M.

Harris County Deed Book. Volume V, Page 418. H.G. Smith by Atty to Mary Jones

## V. APPENDIX

In January, 1858, Dr. Jones died, and on January 29 of the same year, just fifteen years after moving to the farm in Washington county, his widow and her four children moved to Galveston, where they lived nearly one year. In December, 1858, they moved to a farm in Harris county situated on Goose creek, about ten miles from Lynchburg. From here the eldest children were sent to school in Galveston until the beginning of the civil war in 1861, when a school was established at a short distance by Mr. and Mrs. Kemp, who were in turn succeeded by Mr. Preston, who had a flourishing school there for some years.

*The Houston Post.* (Houston, Tex.), Vol. 23, No. 6, Ed. 1, January 1, 1908 Page: 10

  
 We learn from our friend Dr Smith that a new post office has been established at Hageman's Landing, named Baytown. The crops of that section are very promising. A school under charge of Mr and Mrs Kemp is to be opened in that neighborhood. There are pupils enough there to make a full school.  


*The Weekly Telegraph* (Houston, Tex.), Vol. 25, No. 10, Ed. 1, May 25, 1859 Page: 1

## V. APPENDIX

tary.

◆◆◆

### Bayland Orphans' Home.

Bayland Orphans' home, for the care and education of orphan children, is situated in the northern edge of the city limits. While the buildings are not fine, they are commodious and comfortable. The home owns about thirty-four acres of ground which are planted in fruit trees, vegetables, etc.

The boys are required to assist in the work of the farm, outside of school hours, and the girls are taught to sew and do housework.

There is a well conducted school on the place where the children have all the advantages of the city school system for the full term.

It was during the war between the States that Mr. John L. Bryan of Bayland brought Rev. C. C. Preston from Louisiana as a private tutor to his children, but soon he became teacher for all the children in that district, using the Harmony Grove school and church building for the purpose. Being a man of tenderest feeling and leading a life so closely allied to that of the children, his thoughts were constantly with the children of the community who had been made orphans by the war, and so he conceived the idea of founding an orphan asylum.

The home was started as an orphanage for the children of the Confederate dead, private individuals giving tracts of land and other property for the endowment of the institution. In 1866 Mr. Preston presented a petition

to the legislature asking for a charter to incorporate the home, calling it "Bayland Orphans' Home," and the act was passed, naming as trustees Hon. W. P. Ballinger of Galveston, Dr. J. S. Bryan of Houston, Colonel M. S. Munson of Brazoria county, H. F. Gillette of Bayland, John T. Brady, Colonel Ashbel Smith of Evergreen and Colonel T. H. Merriman of Galveston.

In 1868 the home was removed to Houston and its charter renewed for a term of fifty years.

As early as 1856 lands were set aside by the State for an orphan asylum, and in 1873 a part of these lands had been given to the Bayland home. The sale of part of the lands and donations from Houston enabled the trustees to buy a thirty-five-acre

tract of land two and a half miles north of the court house, for which they paid \$15,000, and a large airy building. Mr. J. W. Fagua assumed the position of superintendent and Mrs. Lydia D. Preston as matron, with characteristic generosity would receive very few wants each month, the remainder she left with the home.

While the hospitals in Galveston and Harris county the trustees have not shut themselves in the faces of any from the outside who are in need of care. As a matter of fact, several series of children from the outside have been cared for in the home.

The board of trustees is composed of R. M. Hall, president; J. V. Deane, secretary; R. B. Baer, L. M. Ryan, William Christian, E. W. Taylor and J. Seth F. Meyer.

◆◆◆

*The Houston Post.* (Houston, Tex.), Vol. 23, Ed. 1 Monday, September 2, 1907 Page: 36



SEMI-WEEKLY TRIBUNE—HUMBLE DAY NUMBER

## GOOSE CREEK'S SCHOOLS

By J. S. Spratt

Public schools have had a stormy career in Texas. Neither Spain nor Mexico made any effort to create schools in Texas. In fact, one of the main reasons for Texas declaring herself independent of Mexico was because the mother country had failed to fulfill her promise to establish public schools for the American settlers who had moved their homes to Texas. So, the makers of the constitution of the Lone Star Republic saw to it that provision was made in the document for a public school system. President Lamar, the author of the statement, "Cultivated mind is the guardian genius of democracy—It is the only dictator that freemen acknowledge and the only security freemen desire," was responsible more than any other for the early schools in Texas. He saw to it that the congress of the republic set aside thousands of acres of land in each county for schools.

Progress even with this assistance was very slow but with the blessings of statehood the schools of Texas were just beginning to develop when the strife between the North and the



J. C. INGRAM  
Supt. of Schools

South again threw things into a state of confusion. Goose Creek and the surrounding territory suffered with the rest of Texas. It seems to have been after the Civil War had closed before a school was taught in this section.

About 1868 or 1869, Miss Lina E. Gailliard taught the first school ever conducted in this

place. This was a private school taught in an old two room house which stood at the mouth of Goose Creek and had been used by the Confederate troops garrisoned there during the war. Miss Gailliard conducted a private school in this building until 1874 or 1875 the state opened a public school with Miss Gailliard as teacher and in the same building.

Later the location of the building was changed from the shore back to a plot of ground between Goose Creek and Pelly. This was done about the beginning of the eighties. The plot of ground was on or very near the Anson Jones home and is today a part of the Goose Creek school campus.

Here the school, which was about ten years or until the beginning of the nineties. The location was again changed in order that the building might be more centrally located, and this time it was moved to the D. A. Wiggins tract of land. Mr. Wiggins offered to donate two acres of land for the building to be erected on but for some reason or other he never did yet there were no more changes made until recent years. The old building erected here served as the school until oil developments began to bring more people here. Just a little to the west of the rodeo grounds today is seen a small frame house and this house is the old school building.

The first house to be used in the later years was down on the bay about 1913 or 1914. Shallow oil had brought several families who had settled along the bay. A small frame building was erected there and used for a while. Goose Creek Independent School District was formerly a part of the Cedar Bayou district, but about 1918 there were enough people in Goose Creek to justify a division of the old dis-

trict. The state legislature passed a bill making two districts and since that time things have moved in a rapid pace but still it has not been sufficient to meet the demands of an ever increasing population. Division was made during the school year but no change was made until after the session had closed.

One March the census was taken, showing less than a hundred children of scholastic age, but by the time school opened in the fall there were something like five hundred children here. Something had to be done and done at once. Subscriptions were raised among the people and especially among the oil companies.

Next year the Parent-Teachers Association raised money and built four additional rooms to this frame building. Conditions demanded more room and a building was rented in Pelly and later even the Y. M. C. A. building was used.

Mr. Crawford was elected superintendent and realizing like many others, that something must be done, he set to work to carry through a plan which was to remedy the terrible situation. It was largely through his efforts that the campaign for a greater school was successfully carried through. The first bond issue voted was for \$250,000.00 but the attorney general refused to sanction it because it covered a greater percentage of the taxes than was allowed by law, he claimed. The second issue voted was also too large but the third, for \$200,000 was accepted and work was soon started. Be-

fore 1922 closed, the corner stone of the high school building was laid and in March, 1923 the building was occupied for the first

time. The Grammar school building and the Baytown buildings were (Continued on next page)



GRAMMAR SCHOOL BUILDING, GOOSE CREEK

### NINTH GRADE ORGANIZED

To provide for the organization of classes in the Cedar Bayou school, it was necessary for the ninth grade to rely upon strict organization for their success in leading the other worthy classes to higher planes of usefulness.

The Class officers were elected as follows: President, Roy Donnelly, Vice President, Nina Ilfrey, Sec-treas., Lorraine Jackson.

Class colors were also adopted. Those chosen for this purpose were, gold and white.

The flower chosen was the carnation, because of its delicacy and beauty.

A neat little class pen was ordered for each member of the class.

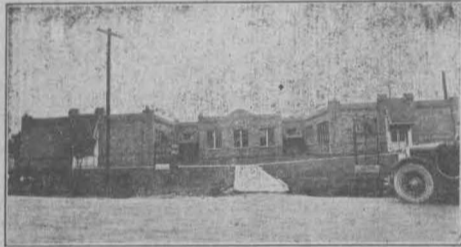
The school for the past week has enjoyed a very interesting art exhibit. This has been conducted by the members of the

ninth grade, for the purpose of buying paintings, as a gift for school. The help and loyal support which the other grades gave especially the eighth grade is highly appreciated. The art exhibit has so far, made a net profit of forty dollars for the purchase of paintings to be hung in the school building. We fully realize the benefit derived from the art exhibit, from the standpoint of art appreciation, if it had served no other purpose. You people who missed it, missed something very educational and worth while.

If the school can progress and make steps in advance for higher plans of service rendering, with out the support of all the parents, and people of the community, think if you can, the wonder success which could be accomplished, if we had the loyal support of every individual of the community. "May we have yours?"—Contributed.

### Goose Creek Undertaking Co.

AMBULANCE SERVICE—DAY OR NIGHT  
R. R. Zierlein Phone No. 1, Any time



GOOSE CREEK HIGH SCHOOL BUILDING

## Goose Creek Schools

(From Preceding page). occupied for the first time during the session of 1923-1924 while the high school building was occupied for the first full session the same year. Goose Creek's educational plant today is one of the most complete and best equipped in the state. In addition to the three buildings just mentioned there is a modern two room brick building for the negro boys and girls completed in October 1924. As yet no building is provided for the Mexican children and at the present the Mexican recreation hall of Baytown is being used for the Mexican children. All the structures are built on the Spanish style of architecture. The Baytown building contains four well equipped rooms also an office and book room.

Largest of all the buildings, is the grammar school. This structure houses almost a thou-



R. M. GROVER  
Principal, Baytown School

sand children; contains twenty-three class rooms, a splendid auditorium seating seven hundred people; there is also the principal's office and just across the hall one of the most cozily furnished parlors to be found in any school. Even with this number of class rooms the building has been over crowded all year. A force of twenty-three teachers and the principal are employed to see after this building.

The grammar school is fairly well equipped throughout. There however, is a noticeable lacking in necessary maps, charts, supplementary textbooks, source and reference books. Much has been done to remedy this during the current year and several sets of

Next in size comes the high school building. This contains eleven class rooms. There is also a combined auditorium and study hall and adjoining this room is the library. The building also contains the office of the principal, a room for the board of directors and the superintendent's office. Eleven teachers and the principal run this plant.

The science department is just about the best equipped department of the high school. It contains about \$5,000.00 worth of equipment and is surpassed by few if any high school laboratories in the state. Closely on the heels of the science department is the home economics division which is also well equipped. The commercial department runs the other two sections a close third. There are in the neighborhood of a thousand volumes in the high school library representing an expenditure of \$1500.00. This is one part that the entire community could help enlarge in a great way by donat-

ing good books, works of history, science, and literature also files of periodicals. Every little bit helps and a good school must have a good library for reference.

Forty three people compose the faculty for the Goose Creek schools. There are three principals, one teacher for the negro school, one for the Mexican children, eleven in high school, twenty-three in the grammar school and the superintendent. The census for 1924-25 was 1395 but for the term 1925-26 it has increased to 1697. This increase in the number of students will make it necessary to provide more room and more teachers. As yet there has been no provision made to meet this situation. At the present time the running expenses

There are several things to be seen after that equipment for the playgrounds has been almost wholly neglected. The primary children have no equipment whatever, but there are several basket ball courts and a volley ball court, and this spring three tennis courts have been made. Things have become more settled now and plans are being made to start early in the future to provide for some sort of amusement for all of the boys and girls.

The two smaller buildings are heated by coal stoves, but the two larger buildings, high school and grammar school are heated by steam from a central plant. The system used is the Kewanee Electric Heating system. The plant burns crude oil for fuel and is fed automatically by electrically controlled system.

A modern school cafeteria is operated by the Parent-Teachers association on the high school-grammar schools campus. This plant and equipment represents an expenditure of about \$2500.

Several hundred boys and girls eat their lunch here at cost. The menu consists of sandwiches, one hot dish, fruits, candies and ice cream. This year the cafeteria is being operated under the management of the students.

Up to the session of 1923-24, the Goose Creek schools had neither classification nor affiliation. That year they applied for both and received the two. The high school was classified as a first class high school and granted 15 1-2 units of affiliation which is two or three units more than was ever granted to any other school in Texas for the same period of work. This year eight more units are being applied for which will raise the total to 23 1-2.

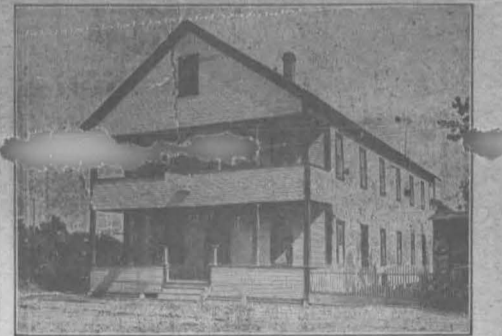
The high school here has had an unusual difficulty in the past year in that it has had extremely large classes and very small senior classes, but this condition is growing better each year. Last year twelve or thirteen boys and girls were in the graduating class. This year about sixteen will graduate and there is a class of about forty following them for the honors next year.



R. J. ALSUP  
Principal, Grammar School

Mr. J. C. Ingram is just finishing his second year with the Goose Creek schools and the year as superintendent of schools. This year under his able direction the schools are just at the close of the most successful year in the history of their operation. The board of trustees recently elected Mr. Ingram for another year and thereby showing their appreciation for the fine work he has done. Assisting Mr. Ingram in his work are Mr. Ed-

These to only to make a successful year but have looked ahead and planned their work so that the future will profit by what has been done even more than the present. In other words, the sole object of these men has been to put the Goose Creek schools in the first rank of Texas schools.



## Uneda Hotel

MODERN

Reasonable Rates for Room and Board

PELLY, TEXAS

W. C. Mayfield, Proprietor

## V. APPENDIX

**School Districts of Harris County.**

The Board of School Directors have passed resolutions, dividing the County of Harris into ten School Districts, as follows:

Resolved, That in compliance with Section 14 of the new School Law, passed May 22, 1873, this County be divided into ten School Districts, bounded as follows:

First District—All of Third Ward, City of Houston.

Second District—All of Fourth Ward, south of Buffalo Bayou.

Third District—All of Fourth Ward, north of Buffalo Bayou.

Fourth District—All of First Ward, city of Houston.

Fifth District—All of Fifth Ward, City of Houston.

Sixth District—All of Second Ward, City of Houston.

Seventh District—Justice's Precinct No. 2.

Eighth District—Justice's Precinct No. 3.

Ninth District—Justice's Precinct No. 4.

Tenth District—Justice's Precinct No. 5.

**JUSTICE'S PRECINCT NO. 3 (S. S. ASHE, J. P.)**

Election Precinct No 1, begins at San Jacinto river, at Lynchburg; thence down the channel of said river to the mouth of Goose Creek (**Bayland**); thence up said creek to its head; thence on a line due north to the Texas & New Orleans Railway; thence up said road to Carpenter's Bayou; thence down said bayou to its mouth, and down Buffalo Bayou to Lynchburg. Voting and registering place at Tomkin's store, Lynchburg. Presiding officer, A. P. Tompkins.

Election Precinct No. 2—Begins at the mouth of Goose Creek (**Bayland**) San Jacinto River; thence down that river to the mouth of Cedar Bayou; thence up Cedar Bayou to the Texas and N. O. Railway; thence along said road to the east boundary of Election Precinct No. 1; thence with said line south to the head of Goose Creek; thence down said creek to place of beginning—voting and registration place at Charles Jeffrey's store, Cedar Bayou. Presiding officer, S. Lawrence.

(L) *The Houston Telegraph* (Houston, Tex.), Vol. 39, No. 17, Ed. 1, August 28, 1873 Page: 7

(R) *The Houston Telegraph* (Houston, Tex.), Vol. 39, No. 16, Ed. 1, August 21, 1873 Page: 8

DIRECTOR'S

SCHOOL RECORD

FOR

*Harris* County,

STATE OF TEXAS,

DESIGNED TO ESTABLISH

A UNIFORM METHOD OF KEEPING THE RECORDS OF  
THIS COUNTY,

AS REQUIRED BY THE CONSTITUTION.

PREPARED BY

O. N. HOLLINGSWORTH,

Superintendent of Public Instruction.



GALVESTON, TEXAS:

"News" Book and Job Printing Establishment.

1874.

## Miscellaneous Orders -

Description and Boundary of this School District.

No. \_\_\_\_\_ County: \_\_\_\_\_

Miscellaneous Orders.  
made by the  
County Judge of Harris County  
relating to  
Public Schools.

During the Scholastic Year  
beginning  
September 1<sup>st</sup>, 1876.

Houston, Oct. 16-1876.

Col. Abbel Smith, Capt. E. W. Taylor  
 and Prof. Horace Clark, are hereby  
 appointed as a Board of School Ex-  
 aminers for this County, for this  
 Scholastic Year -

C. Anderson  
 County Judge

## Description and Boundary of this School District,

No. \_\_\_\_\_ County.

1877 - 1878.

~~Teachers~~ Certificates renewed.

Aug. 3 - 1877 Miss Lina E. Gaillard

Aug. 4 - 1877 Mayo V. Blute -

Proceedings of School Directors.

November 22 - 1876 -

The Petition of Gilbert Brooks, J. S. Latt and others - parents and guardians - at Goose Creek asking the Establishment of a school Community at that place, and the list of children accompanying the same being examined, and being satisfied that said petition is in good faith, the establishment of said school Community is approved and sanctioned, and the same is designated as "Goose Creek School Community No 9";

Jesse Brooks, H. F. Gillette and La Fayette W. Jones are appointed trustees for said school Community.

And it further appearing that said school Community has a school house of sufficient size to accommodate the number of children reported, the sum of thirty seven <sup>00</sup>/<sub>100</sub> dollars (\$37.<sup>00</sup>/<sub>100</sub>) is apportioned and directed to be credited to said school Community as its pro rata of the available school fund for this scholastic year - Additionally an additional sum of  $2.<sup>85</sup>/<sub>100</sub>$  is apportioned said Community - total \$39.<sup>85</sup>/<sub>100</sub>.

V. APPENDIX

Goose Creek Oct 28<sup>th</sup> 1875  
Mrs Mary Jones  
Dear Madam  
The Public School Committee  
asked me some time ago to write  
you and ascertain if you will sell  
or donate to the State a piece of  
land out of your corner next to  
Mrs Franck's place on the road  
to Cedar Bayou, whereto to build  
a public school house the Commit-  
tee say it might be of advantage  
in the sale or rent of the rest of your  
place  
I have been sick not able  
to write for more than a month  
and now have only strength to say  
"God bless you"  
Sincerely yr friend  
J. B. Fairlands

I thought you  
had made the  
land asked for  
within, you had  
better make it  
at once  
M. J.

Jones, Mary Smith (1819-1907). Letter from Mary Jones to Cromwell Anson Jones, October 28, 1875 - Page 1&2. October 28, 1875. Special Collections, University of Houston Libraries. University of Houston Digital Library. Web. September 5, 2017.

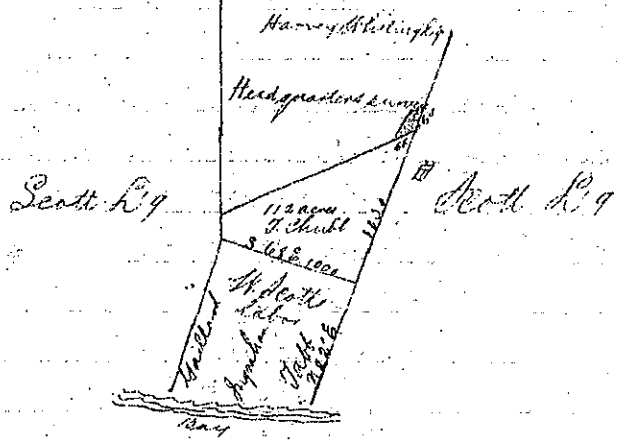
my hand & official seal at office in Houston April 27, 1880. J. T. Ferguson  
Not. Pub. H. C. <sup>1345</sup> <sup>720</sup> Seal.

Filed for Record April 27<sup>th</sup> 1880 at 5<sup>00</sup> o'clock P. M.  
and Recorded May 4<sup>th</sup> 1880 at 11<sup>55</sup> o'clock A. M.

71626  
Messrs Mary Jones  
To / Deed  
L. Anson Jones  
Co. Judge

The State of Texas Montgomery County. Know all men by these presents that S. Mary Jones of said County, in consideration of one dollar to me paid and for other good causes and considerations have given granted and released and by these presents do give grant and release unto L. Anson Jones, County Judge of Harris County, Texas, and his successors in office, in trust for public free school purposes, for the benefit of the white children of the neighborhood the following land in Harris County, Texas, to wit: one and one half (1 1/2) acres of land out of the Harvey Whiting grant, part of my homestead place, and out of the South East corner of said tract, to be taken in the most convenient shape and so as to include the present school house standing on said tract about six hundred yards to the eastward of my former dwelling house, said one and one half acres to be taken out of the corner of the tract & to be bounded on the South by the north line of a tract of land sold by me to Capt Thomas Chubb in 1869, now belonging to Mrs. Chubb, and on the east by the lands of Col. Ashbel Smith, together with all and singular the rights, members, hereditaments and appurtenances to the same belonging, or in anywise incident or appertaining. To have and to hold, all and singular, the premises above mentioned unto the said L. Anson Jones, County Judge and his successors in office in trust, as aforesaid, forever. Witness my hand at Willis, Texas, this 18<sup>th</sup> day of January 1879. Mary Jones, Seal, State of Texas Montgomery County. Before me A. Richards, a Notary Public in and for Montgomery County, State of Texas duly qualified in term of the law, this day came and personally appeared Mrs. Mary Jones of the County, aforesaid, to me personally known, who acknowledged the execution of the above and foregoing deed of conveyance bearing date January 18<sup>th</sup> 1879, and delivered the same under my hand and seal for the purpose and considerations therein set forth and contained. Given under my hand and official seal at my office in Willis Montgomery County Texas, this Twenty fifth day of January one thousand eight hundred and seventy nine. A. Richards, Notary Public Montgomery County Texas.





State of Texas, Harris County, Field notes of a survey of one and one half acres of land, out of the east side of the "Head Quarters" survey which is a part of a league originally granted to Harvey Whiting situated on the waters of Goose Creek, a tributary of San Jacinto Bay and about            miles eastwardly from the City of Houston. Beginning at the N. E. corner of 112 acres previously sold to Thomas Thubb, and now owned by Mrs Grant. Thence S 70° W 66rs along Mrs Franks North line to a stake. Thence N 20° E. 104 rs to a stake. Thence N 70° E. 66rs to a stake in the east line of Harvey Whiting league or west line of the Scott league. Thence S. 22° W 66rs along the Scott and Whiting line to the place of beginning. G. L. Gillespie Sec. Surveyor of H. C. Surveyed Nov. 27<sup>th</sup> 1849.

Filed for Record April 28<sup>th</sup> 1880 at 10<sup>55</sup> o'clock A.M.  
and Recorded May 4<sup>th</sup> 1880, at 2<sup>55</sup> o'clock P.M.

Thos. Harris  
and  
Ann E. Sydney  
Deeds  
of Harris  
County

The State of Texas, County of Harris, Know all men by these presents that we J. H. Kane and Ann E. Sydney of the County of Harris and State of Texas in consideration of Ten Dollars to us paid by the State of Texas have granted bargained, sold, and released and by these presents do grant bargain, sell and release unto A. K. Jones, Chief Justice of Harris County, and to his successors unto office the following described land and premises lying and being situated in the County of Harris, Texas, and about five eighths of a mile North from Lynchburg Ferry on the east side of the San Jacinto River and known as part of the Brown lot and more particularly known as Block number 10 (N.D.) laid out by Mrs J. H. Kane and J. E. Sydney said lot is situated in the South east corner of said Block number 10 fronting and abutting upon said street and front is twenty

V. APPENDIX



United States Geological Survey, 1920, *Morgan Point Quadrangle Map SGS Quadrangle map*, Texas,

Map data was based on the 1916 survey. Note the 1886 location of the schoolhouse.

V. APPENDIX

15  
 1889

SCHOOL DIST. No. 15 IN ACC'T WITH

|         |                              |             | Order<br>Paym<br>(w) | Goose Creek<br>(w) |  |  |  |   |
|---------|------------------------------|-------------|----------------------|--------------------|--|--|--|---|
| Oct. 5  | Jno. M. Bell                 | Lea         | 50.00                |                    |  |  |  |   |
| Nov. 4  | " " "                        | "           | 50.00                |                    |  |  |  |   |
| Dec. 7  | " " "                        | "           | 50.00                |                    |  |  |  |   |
| Jan. 10 | " " "                        | "           | 50.00                |                    |  |  |  |   |
| Feb. 14 | " " "                        | "           | 50.00                |                    |  |  |  |   |
| Mar. 22 | Stella McCracken             | "           |                      | 35.00              |  |  |  |   |
| " 25    | J. M. Bell                   | "           | 50.00                |                    |  |  |  |   |
| Apr. 19 | " " "                        | "           | 50.00                |                    |  |  |  |   |
| May 10  | Stella McCracken             | "           |                      | 35.00              |  |  |  |   |
| " "     | " " "                        | "           |                      | 35.00              |  |  |  |   |
| " 24    | Jno. M. Bell                 | "           | 50.00                |                    |  |  |  |   |
| June 28 | " " "                        | "           | 50.00                |                    |  |  |  |   |
| July 12 | Stella McCracken             | "           |                      | 35.00              |  |  |  |   |
| " "     | " " "                        | "           |                      | 35.00              |  |  |  |   |
| Sept 6  | Order 14, B. Cline           |             |                      |                    |  |  |  |   |
|         | Transfer to Goose Creek D 15 |             |                      |                    |  |  |  |   |
|         | Balance Forward Page 15      |             | 477                  | 201                |  |  |  | 2 |
|         | Totals                       |             | 45477                | 17901              |  |  |  | 2 |
| Oct 18  | 1890                         | Shelly Mair | 50.00                |                    |  |  |  |   |
| Nov 8   | " "                          | "           | 50.00                |                    |  |  |  |   |
| Dec 23  | " "                          | "           | 50.00                |                    |  |  |  |   |
| Jan 14  | " "                          | "           | 50.00                |                    |  |  |  |   |
| Feb 14  | " "                          | "           | 50.00                |                    |  |  |  |   |
| Mar 14  | " "                          | "           | 50.00                |                    |  |  |  |   |
| May 30  | Julia J. Leath               | "           | 50.00                |                    |  |  |  |   |
| June 20 | Stella McCracken             | "           |                      | 33.40              |  |  |  |   |
| " "     | " " "                        | "           |                      | 33.40              |  |  |  |   |
| July 15 | Julia J. Leath               | "           | 50.00                |                    |  |  |  |   |
| " "     | " " "                        | "           | 50.00                |                    |  |  |  |   |
| Aug 19  | Stella McCracken             | "           |                      | 33.40              |  |  |  |   |
| " "     | " " "                        | "           |                      | 33.40              |  |  |  |   |
| " "     | " " "                        | "           |                      | 33.40              |  |  |  |   |
|         |                              |             |                      | 107.00             |  |  |  |   |
|         | Balance to Page 56           |             | 1477                 | 01                 |  |  |  |   |
|         | Totals                       |             | 46477                | 16701              |  |  |  |   |

School Ledger, Harris County School Records 1889-1894, Location 1030-A-03

V. APPENDIX

58  
 SCHOOL DIST. No. 15 IN ACC'T WITH

|         |                                   | Edgar<br>Boyer<br>(10) | Goose<br>Creek<br>(10) |
|---------|-----------------------------------|------------------------|------------------------|
| 1891    |                                   |                        |                        |
| Sept 29 | Dr. John J. transfer from Bastrop |                        |                        |
| Nov 28  | Fannie Powell                     | 50 00 ✓                |                        |
| " "     | " "                               | 50 00 ✓                |                        |
| Dec "   | " "                               | 50 00 ✓                |                        |
| " 29    | Annie Laugford                    |                        | 33 00 ✓                |
| Jan 18  | " "                               |                        | 33 00 ✓                |
| Feb 70  | Fannie Powell                     | 50 00 ✓                |                        |
| " "     | Ella McLean                       | 25 00 ✓                |                        |
| " "     | Annie Laugford                    |                        | 33 00 ✓                |
| Mar 21  | Ella McLean                       | 25 00                  |                        |
| " "     | Fannie Powell                     | 50 00                  |                        |
| Apr 20  | Annie Laugford                    |                        | 33 00 ✓                |
| " "     | " "                               |                        | 33 00 ✓                |
| June 4  | Ella McLean                       | 25 00 ✓                |                        |
| " "     | " "                               | 25 00 ✓                |                        |
| " 10    | Fannie Powell                     | 50 00 ✓                |                        |
| " "     | " "                               | 50 00 ✓                |                        |
| " "     | " "                               | 33 00 ✓                |                        |
| July 26 | Annie Laugford                    |                        | 33 00 ✓                |
| Sept 1  | Balance Brought                   | 77                     | 91                     |
|         | Totals                            | 483 97                 | 198 91                 |
| 1892    |                                   |                        |                        |
| Sept 10 | Wm. Haden                         |                        | 2 00                   |
| " 17    | Benny Mfg. Co.                    |                        | 17 50                  |
| Nov 4   | Mr. C. C. Blue                    | 30 00                  | 32 22                  |
| " "     | " "                               | 30 00                  | 32 22                  |
| " "     | " "                               | 50 00                  | 32 22                  |
| " "     | " "                               | 50 00                  | 32 22                  |
| Dec 17  | Mr. " "                           | 30 00                  |                        |
| " 1893  | Mr. " "                           | 50 00                  |                        |
| Jan 3   | Mamie Blackshear                  |                        | 35 00                  |
| " 28    | Mr. C. C. Blue                    | 30 00                  |                        |
| " "     | " "                               | 30 00                  |                        |
| " "     | Mr. C. C. Blue                    | 50 00                  |                        |
| " "     | " "                               | 50 00                  |                        |
| Mar 10  | Mamie Blackshear                  |                        | 35 00                  |
| Apr 1   | Mr. " Blue                        | 50 00                  | 35 00                  |
| " "     | " "                               | 50 00                  |                        |
| " "     | " "                               | 30 00                  |                        |
| " "     | " "                               | 30 00                  |                        |
| June 2  | Mr. C. C. Blue                    | 19 27                  |                        |
| July 2  | Mamie Blackshear                  | 32 30                  |                        |
| " "     | " "                               | 61 77                  | 35 00                  |
| " "     | " "                               |                        | 35 00                  |
| " "     | " "                               |                        | 61 03                  |
|         | Totals                            | 611 77                 | 306 41                 |

School Ledger, Harris County School Records 1889-1894, Location 1030-A-03

V. APPENDIX

99  
 SCHOOL DIST. NO. 15 IN ACC'T WITH

|             |                               | Capar<br>Paym | Goose<br>Creek |   |  |  |  |  |  |
|-------------|-------------------------------|---------------|----------------|---|--|--|--|--|--|
| 1893        |                               |               |                |   |  |  |  |  |  |
| Oct 78      | Mrs C. H. C. Blue             | 30.00         |                | ✓ |  |  |  |  |  |
| "           | Mrs " "                       | 50.00         |                | ✓ |  |  |  |  |  |
| Nov 25      | Clennet Appleyard             |               | 40.00          | ✓ |  |  |  |  |  |
| Dec 2       | C. H. C. Blue                 | 50.00         |                | ✓ |  |  |  |  |  |
| "           | "                             | 45.00         |                | ✓ |  |  |  |  |  |
| "           | Mrs " "                       | 30.00         |                | ✓ |  |  |  |  |  |
| "           | "                             | 27.00         |                | ✓ |  |  |  |  |  |
| Jan 10 1894 | Clennet Appleyard             |               | 40.00          | ✓ |  |  |  |  |  |
| 12 "        | C. H. C. Blue                 | 30.00         |                | ✓ |  |  |  |  |  |
| 12 "        | "                             | 50.00         |                | ✓ |  |  |  |  |  |
| Feb 7       | Clennet Appleyard             |               | 40.00          | ✓ |  |  |  |  |  |
| "           | C. H. C. Blue                 | 50.00         |                | ✓ |  |  |  |  |  |
| Feb 30      | Clennet Appleyard             |               | 40.00          | ✓ |  |  |  |  |  |
| Apr 20      | "                             |               | 40.00          | ✓ |  |  |  |  |  |
| May 11      | C. H. C. Blue                 | 30.00         |                | ✓ |  |  |  |  |  |
| "           | "                             | 35.00         |                | ✓ |  |  |  |  |  |
| "           | "                             | 21.00         |                | ✓ |  |  |  |  |  |
| Sept 11     | Balance Forward to New Ledger | 60            | 33.03          |   |  |  |  |  |  |
|             | T. A. L.                      | 445.00        | 252.03         |   |  |  |  |  |  |

School Ledger, Harris County School Records 1889-1894, Location 1030-A-03

## SCHOOL OFFICIALS ARE "UP A TREE"

Goose Creek District Presents Some  
Novel Questions.

Attendance Increased 200 Per Cent,  
Building Is Too Small and Lone  
Teacher Can't Find Board-  
ing House.

School officials of school district No. 15 are "up a tree" regarding the Goose Creek school. There are too many pupils and too little money for the school.

Last year the highest attendance at the Goose Creek school was 20. Only one teacher was employed, of course, and she was paid \$55 a month.

When the school census was taken it was found that only half of the children of school age were attending. There should have been 39, and the census was put down at that figure.

When the school opened Monday, Miss Cora Lazenby, the teacher, sat at her desk and welcomed 60 bright shiny faces at the Goose Creek school, more than a 90 per cent increase over the school census for that school and just exactly 200 per cent increase over the attendance last year.

### HARD TO FIND A BOARDING HOUSE.

To make matters worse, it was almost impossible to find a boarding place for Miss Lazenby. Owing to the influx of people and the feverish anxiety of those already there to strike oil, there are no boarding houses. Last year the teacher had no difficulty in finding a place to board. Everybody wanted her.

This year, though, it seemed that no one wanted her because they had other things to do or because they were already filled to the overflowing with boarders. From house to house went John M. Kil-

gore, secretary of the board of trustees of district 15, trying to find a place for Miss Lazenby. Finally, one family consented to take her until they found another place.

### NECESSARY FOR CHILDREN TO GO TO CEDAR BAYOU SCHOOL.

Mr. Kilgore said that some of the children of the Goose Creek territory have already started to the Cedar Bayou school, four miles distant, on account of the lack of accommodations at home. Most of the new children at Goose Creek have moved from Humble, where there is school money for them, but they can not take it with them to Goose Creek. Furthermore, they can not go back there to take advantage of it.

Strange to relate, though, County School Superintendent Lyle says that there is no noticeable falling off in the school attendance at Humble.

The trustees of district 15 are trying to find some plan to remedy school conditions. Mr. Kilgore called on Superintendent Lyle Wednesday afternoon and the superintendent promised to assist them in finding some kind of relief, although, he confesses, he is at a loss as to where to go to find it.

*The Houston Post.* (Houston, Tex.), Vol. 31, No. 170, Ed. 1, September 21, 1916 Page: 9

## Heavy Enrollment at Goose Creek School

The Goose Creek school has opened with an enrollment of 400. At present the school is badly congested, but four new rooms are being added on which work is being rushed and when completed they will tend to relieve the congestion.

The school will teach two additional courses this session, that of domestic art and commercial business.

On account of vacancies in the teaching corps the first and third grade pupils attend only half-day sessions.

The heads of the different departments are: English and Latin, Miss M. Duke; mathematics and history, Mrs. Simmons. The primary teachers are: Miss Ole Rainy, Miss Elsie Duke and Mrs. Abbey.

The athletics of the school are under the following supervisors: Boys' basket ball, Miss M. Duke; girls' basket ball, Miss Rainy; girls' baseball, Miss Elsie Duke. The new game of soccer is being introduced this session for the first time, and Mrs. Hollan is acting as coach.

The Parent-Teacher association is taking an active interest in the school work and has been instrumental in furthering the work on the new addition and has recently presented the school with a good supply of athletic equipment.

*The Houston Post.* (Houston, Tex.), Vol. 34, No. 171, Ed. 1, September 22, 1918 Page: 38

## V. APPENDIX

Prof. J. F. Crawford announces that school will begin Monday, September 19, and asks that all children bring their report cards. He also states that all children up to and including the fourth grade will be required to go to the nearest school to their homes. Middle Town children above the fourth grade will attend the New Town school. The 7th grade and high school will at the Y. M. C. A. building.

*Goose Creek Gasser*. Goose Creek Texas, September 10, 1921, Volume 3, Number 32, page 1



1 records of Harris County, Texas, and being the same property conveyed by Mrs. R. Z. Myrick,  
2 of Harris County, Texas, unto the said A. E. Dawson and recorded in Vol. 649, page 424, Deed  
3 Records of Harris County, Texas, and being dated April 5th, 1926.

4 To have and to hold the above described premises, together with all and singular the rights  
5 and appurtenances thereto in anywise belonging, unto the said Robert Henry Morris, his heirs  
6 and assigns forever, and I do hereby bind myself, my heirs, executors and administrators, to  
7 warrant and forever defend, all and singular the said premises unto the said Robert Henry  
8 Morris, his heirs and assigns, against every person whomsoever lawfully claiming or to  
9 claim the same or any part thereof.

10 Except Taxes for 1926  
11 which are assumed by the purchaser. But it is expressly agreed and stipulated that  
12 the Vendor's Lien is retained against the above described property, premises and improve-  
13 ments, until the above described note, and all interest thereon, are fully paid according to  
14 its face and tenor, effect and reading, when this deed shall become absolute.

15 Witness my hand at Houston this 20 day of July A. D. 1926.

16 A. E. Dawson

17 The State of Texas, County of Harris. Before me, E. N. Mills, Notary Public  
18 in and for Harris County, Texas, on this day personally appeared A. E. Dawson, known to me  
19 to be the person whose name is subscribed to the foregoing instrument, and acknowledged to  
20 me that he executed the same for the purposes and consideration therein expressed.

21 Given under my hand and seal of office this 20 day of July A.D. 1926.

22 E. N. Mills, Notary Public in and for Harris County, Texas, (Seal)

23 Filed for record Dec. 1, 1926 at 8.10 o'clock A.M. Recorded Dec. 1, 1926 at 2.55 o'clock P.M.

24 *Albert G. ...* Clerk County Court, Harris County, Texas, By *M. B. ...* Deputy

25 No. 262868

26 Harris County, Texas, By County Judge. To B.C. Morgan, et al, Trs.  
27 Deed.

28 The State of Texas, County of Harris. Know all men by these presents.  
29 That I, Norman Atkinson, County Judge of Harris County, Texas, pursuant to an order of the  
30 Commissioners' Court of Harris County, Texas, and by authority vested in me as County Judge  
31 of said County, for and in consideration of one (\$1.00) dollar and other good and valuable  
32 considerations, to me in hand paid, the receipt of which is hereby acknowledged, have  
33 granted, sold and conveyed and by these presents do grant, sell and convey unto B. C. Morgan  
34 S. A. Jordan, W. Y. Harvey, N. D. Stiles and Dr. F. L. Robbins, the Board of Trustees of the  
35 Goose Creek Independent School District, and to their successors in office forever, the  
36 following described plot or parcel of land, lying and being situated in Harris County, Texas,  
37 to wit:

38 One and one-half (1-1/2) acres of land out of the  
39 "Headquarters Survey" which is a part of a league originally granted to Harvey Whiting,  
40 situated on the waters of Goose Creek, a tributary of San Jacinto Bay, and being about 28  
41 miles eastwardly from the City of Houston, in Harris County, Texas, described by metes and  
42 bounds and follows: Beginning at the N. E. corner of 112 acres previously  
43 sold to Thomas Chubb and now owned by Mrs. Frank; thence S. 73 W. 66 varas along Mrs.  
44 Frank's north line to a stake; thence N. 22 E. 164 varas to a stake; thence N. 73 E.  
45 66 varas to a stake in the east line of the Harvey Whiting League and on the west line of  
46 the Scott League; thence S. 22 W. 164 varas along the Scott and Whiting line to the  
47 place of beginning.

48 The land herein conveyed being the same  
land conveyed by deed from Mary Jones to C. Anson Jones, County Judge of Harris County,  
Texas, and to his successors in office, dated January 18th, 1879, said deed being recorded

in volume 20, pages 481-82 of the Deed Records of Harris County, Texas.

To have and to hold the above described premises, together with all and singular the rights and appurtenances thereto in anywise belonging, unto the said B. C. Morgan, S. A. Jordan, W. Y. Harvey, N. D. Stiles and Dr. F. L. Robbins, the Board of Trustees of the Goose Creek Independent School District, and to their successors in office, as aforesaid, forever, in trust for the use and benefit of the Public Free Schools.

Witness my hand at Houston, Texas, this the 25 day of October A.D. 1926.

Norman Atkinson, as County Judge, Harris County, Texas.

The State of Texas, County of Harris.

Before me, a Notary Public in and for Harris County, Texas, on this day personally appeared Norman Atkinson, County Judge of Harris County, Texas, known to me to be the person whose name is subscribed to the foregoing instrument, and acknowledged to me that he executed the same for the purposes and consideration therein expressed, and in the capacity therein stated.

Given under my hand and seal of office, this the 25 day of October A.D. 1926.

F. W. Waechter, Notary Public in and for Harris County, Texas. (Seal)

Filed for record Dec. 1, 1926 at 8.10 o'clock A.M. Recorded Dec. 1, 1926 at 3.30 o'clock P.M.

*Albert Townsend* Clerk County Court, Harris County, Texas, By *M. Bollen* Deputy

No. 262869

The City of Houston, Texas, By Mayor Pro Tem To Mrs. Paul Jones

Special Warranty Deed

The State of Texas, County of Harris.

Know all men by these presents:

That the City of Houston, Texas, a municipal corporation, acting herein by its Mayor, Pro Tem H. A. Halverton, and its Assistant Secretary, G. E. Belk, for and in consideration of the sum of one dollar to it in hand paid by Mrs. Paul Jones, the receipt of which is hereby acknowledged and the assumption and agreement to pay by the said Mrs. Paul Jones of any paving charged for pavement in front of the property herein conveyed, has granted, sold and conveyed, and by these presents does grant, sell and convey unto the said Mrs. Paul Jones of Harris County, Texas, that certain tract, piece or parcel of land described as follows, to-wit:

Forty (40) square feet of land being a part of Hogg Bark adjoining fractional lot #63 of Wright Wrightwood Addition out of the John Austin Two League Grant, north side of Buffalo Bayou, Houston, Harris County, Texas; and being more particularly described as follows:

Beginning at the grantee's southeast corner on the south line of said fractional lot #63; thence north 79 deg. 07' west along the south line of said fractional lot #63 a distance of 34.6 feet to a point on the proposed south line of Quitman Street formerly known as Maufferd Street, said point being the beginning point of a curve having a radius of 236.7 feet; thence in a southeasterly direction along said curve being a curve to the right having a radius of 236.7 feet a distance of approximately 35 feet to a point on the grantee's east line projected south 2 deg. 09' west; thence north 2 deg. 09' east along said projection of the grantee's east line approximately 2.5 feet to place of beginning.

To have and to hold the above described premises, together with all and singular the rights and appurtenances thereto in anywise belonging unto the said Mrs. Paul Jones, her heirs and assigns forever. And the City of Houston, Texas, does hereby bind itself, its successors and assigns to warrant and forever defend all and singular the said premises unto the said Mrs. Paul Jones, her heirs and assigns, against every person whomsoever claiming by, through or under it, and no further.

In witness whereof, said City of Houston, Texas, has caused this instrument to be executed by its Mayor Pro Tem and to be attested by its Assistant Secretary and its corporate seal hereunto

1  
2  
3  
4  
5  
6  
7  
8  
9  
10  
11  
12  
13  
14  
15  
16  
17  
18  
19  
20  
21  
22  
23  
24  
25  
26  
27  
28  
29  
30  
31  
32  
33  
34  
35  
36  
37  
38  
39  
40  
41  
42  
43  
44  
45  
46  
47  
48

No. 518700

H.C.Tyrrell, et al

To

Benjamin Hunter, Jr.

Deed & Map

The State of Texas, County of Harris Know all men by these presents: That Tyrrell-Garth Investment Company and H. C. Tyrrell of the State of Oklahoma, Thomas Garth and J. W. Garth Jr., of the County of Harris and State of Texas the members of said concern for and in consideration of the sum of two hundred and fifty (\$250.00) dollars cash to them in hand paid by Benjamin Hunter, Jr., the receipt of which is hereby acknowledged and confessed, have granted, bargained, sold and conveyed and by these presents do grant, bargain, sell and convey unto the said Benjamin Hunter, Jr., of the County of Harris and State of Texas, all that certain lot tract or parcel of land located and situated in the County of Harris and State of Texas in the Harvey Whiting Survey out of the one and one-half acre school tract described in deed from Mary Jones to G. Anson Jones recorded in vol: 20 pages 481 and 482 of the Harris County deed records and more particularly described by metes and bounds as follows:

Beginning at the Northeast corner of a tract of 112 acres conveyed by Mary Jones to Thomas Chubb by deed dated on or about June 13, 1862 and recorded in Vol. Z page 378 of the Harris County deed records to which reference is made; thence North 22 deg. east to the intersection of this line with the east line of what is known as the Goose Creek-Pelly Road, which road was within recent months paved with concrete by Harris County; Thence along the east side of said Goose Creek-Pelly paved road in a general south and southwesterly direction curving to the right, to

1 the right to a point where the east or southeast line of said road intersects the south line  
 2 of said school tract described as aforesaid in deed recorded in vol. 20 pages 481 et seq of  
 3 the Harris County deed records; Thence North 73 deg. east along the south line of said 1½  
 4 acre school tract to the place of beginning at 2" pipe and 1" bolt all as per map or plat  
 5 of survey made by J. S. Boyles on or about September 19, 1930 a copy of which is attached hereto  
 6 and made a part hereof; and being a part of the said 1½ acre school tract conveyed to grantors  
 7 herein by deed dated on or about April 9, 1928 and recorded in vol. 773 page 460 of the Harris  
 8 County deed records the premises intended to be conveyed hereby being all that portion of said  
 9 1½ acre school tract which lies east and/or south of the said Goose Creek-Pally paved road as the  
 10 same is now located, upon the ground, together with all improvements thereon situated.

11 To have and to hold the above described and conveyed lands and premises, together with all and  
 12 singular the rights and appurtenances thereto in anywise belonging unto the said Benjamin Hunter,  
 13 Jr., his heirs and assigns forever. And we do hereby bind ourselves, our heirs, executors,  
 14 administrators, successors and assigns to warrant and forever defend all and singular the said  
 15 lands and premises unto the said Benjamin Hunter, Jr., his heirs and assigns, against every person  
 16 whomsoever lawfully claiming or to claim the same or any part thereof, by through or under us,  
 17 or either or any of us. In witness whereof the said Tyrrell-Garth Investment Company and  
 18 the members thereof have executed these presents on this the 27th day of July, A.D. 1931.

19 H. C. Tyrrell                      Thomas Garth                      J. W. Garth, Individually and as the  
 20 Members of Tyrrell-Garth Investment Company.

21 The State of Oklahoma, County of \_\_\_\_\_ Before me the undersigned authority a notary public  
 22 in and for Tulsa County, Oklahoma on this day personally appeared H. C. Tyrrell, known to me to  
 23 be the person whose name is subscribed to the foregoing instrument of writing and acknowledged  
 24 to me that he executed the same for the purposes and consideration therein expressed and in his  
 25 individual capacity and as a member of Tyrrell-Garth Investment Company.

26 Given under my hand and seal of office this the 27th day of July, A.D. 1931.

27 Frank H. Shreck, Notary Public in and for Tulsa County, Oklahoma.

28 My Com. expires July 3, 1932 (Seal)

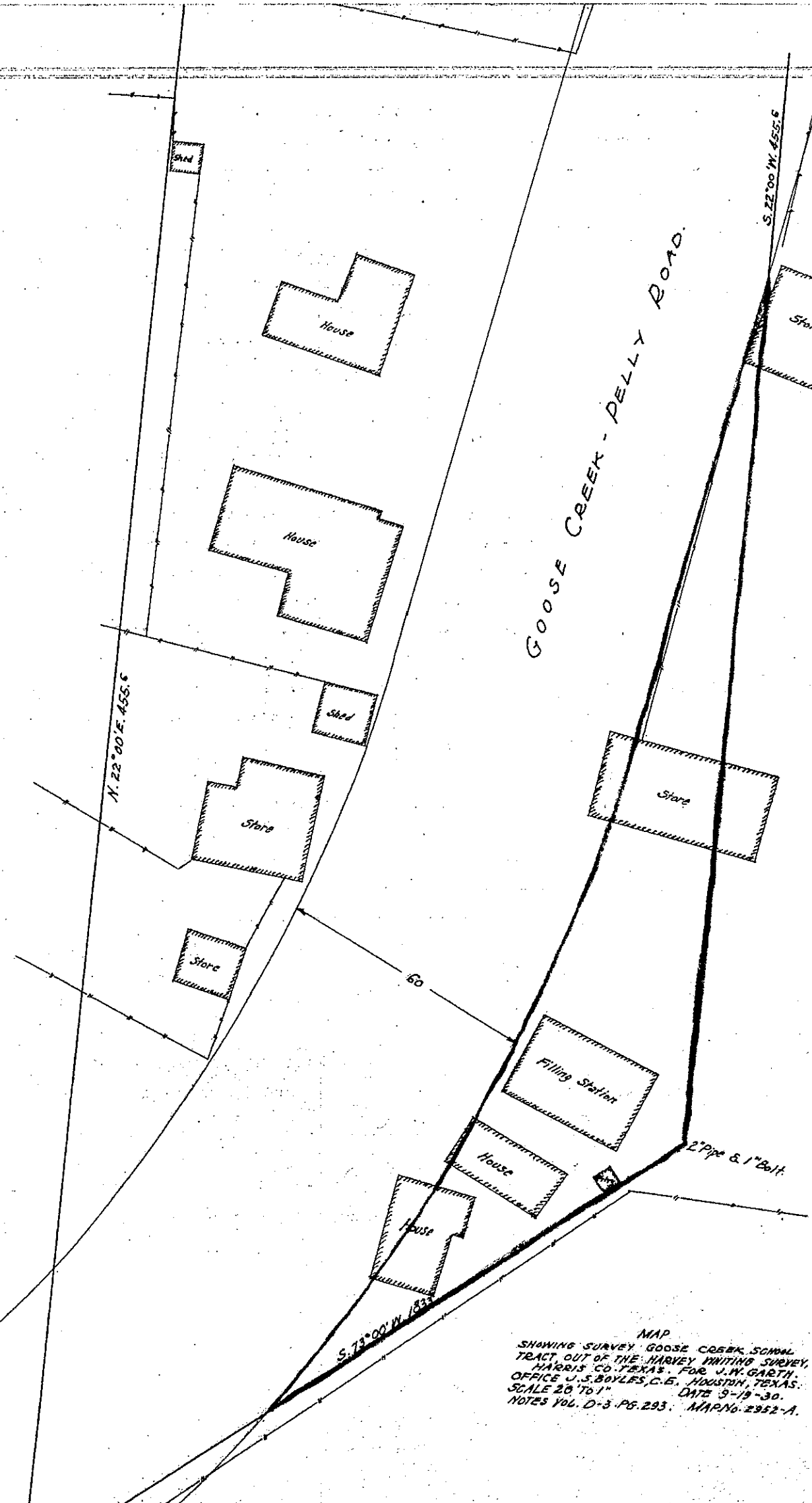
29 The State of Texas, County of Harris Before me the undersigned authority a notary public in  
 30 and for Harris County, Texas on this day personally appeared Thomas Garth and J. W. Garth, Jr.,  
 31 known to me to be the persons whose names are subscribed to the foregoing instrument of writing,  
 32 and severally acknowledged to me that they executed the same for the purposes and consideration  
 33 therein expressed and in their individual capacities and as members of Tyrrell-Garth Investment  
 34 Company. Given under my hand and seal of office this the 28th day of July, A.D. 1931.

35 L.O. Atkins, Notary Public in and for Harris County, Texas (Seal)

36 For Map See Following Page

37 -----  
 38 -----  
 39 -----  
 40 -----  
 41 -----  
 42 -----  
 43 -----  
 44 -----  
 45 -----  
 46 -----  
 47 -----  
 48 -----

1  
2  
3  
4  
5  
6  
7  
8  
9  
10  
11  
12  
13  
14  
15  
16  
17  
18  
19  
20  
21  
22  
23  
24  
25  
26  
27  
28  
29  
30  
31  
32  
33  
34  
35  
36  
37  
38  
39  
40  
41  
42  
43  
44  
45  
46  
47  
48



MAP  
 SHAWING SURVEY GOOSE CREEK, SCHMAL  
 TRACT OUT OF THE HARVEY WHITING SURVEY,  
 HARRIS CO. TEXAS. FOR J. H. GARTH.  
 OFFICE J. S. BOYLES, C. E., HOUSTON, TEXAS.  
 SCALE 20' TO 1" DATE 9-19-30.  
 NOTES Vol. D-3 PG. 293. MAP No. 2952-A.

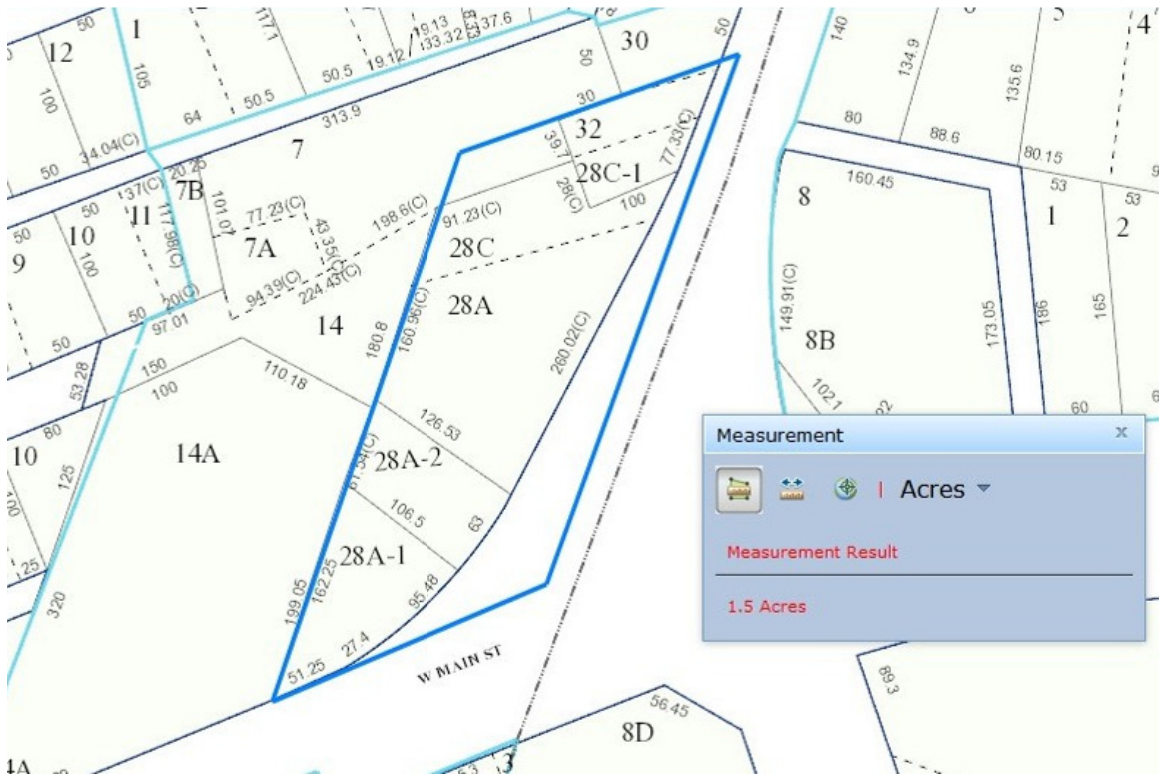
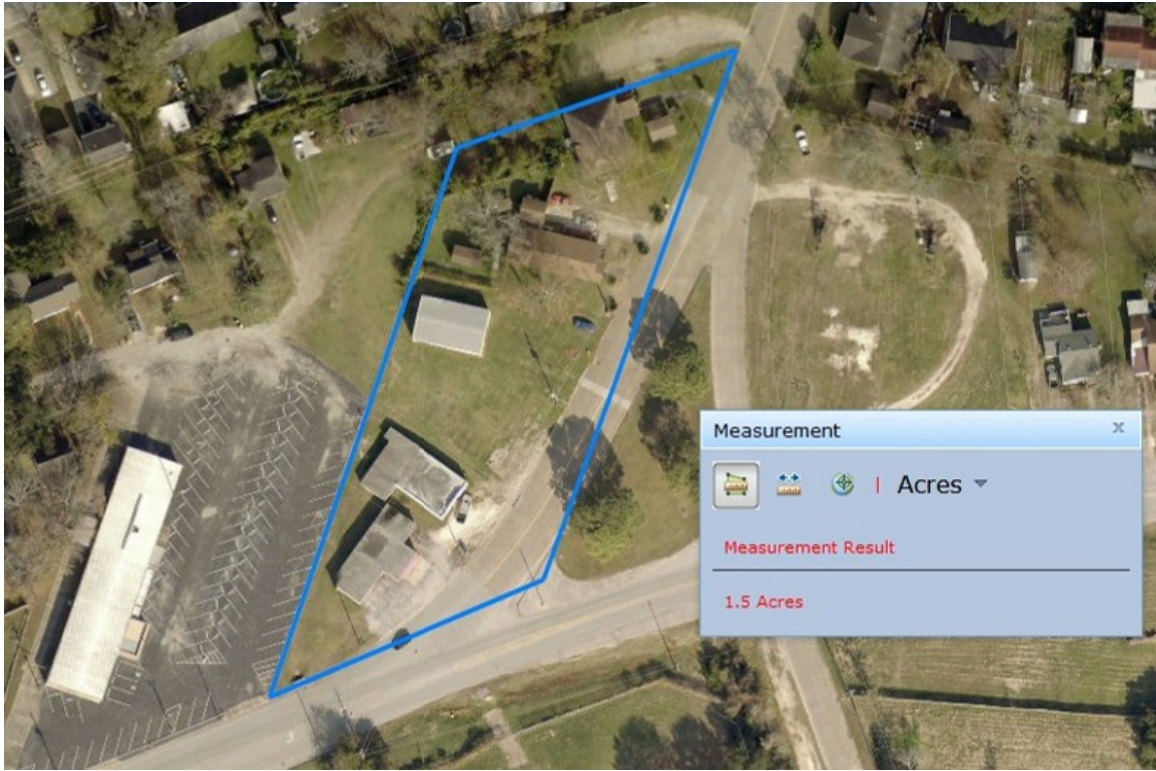
1 Filed for record Aug. 12, 1931 at 9:45 o'clock A.M. Recorded Aug. 14, 1931 at 12:50 o'clock P.M.

2 Albert Townsend Clerk County Court, Harris County, Texas, By B. Chister Deputy  
3 -----  
4  
5  
6  
7  
8  
9  
10  
11  
12  
13  
14  
15  
16  
17  
18  
19  
20  
21  
22  
23  
24  
25  
26  
27  
28  
29  
30  
31  
32  
33  
34  
35  
36  
37  
38  
39  
40  
41  
42  
43  
44  
45  
46  
47  
48

## V. APPENDIX



“Goose Creek School House.” 29°43.731’N and 94°58.274’W. Google Earth. December 31, 1943







Looking north up South Main Street  
The buildings are on the former school land.

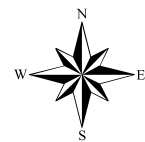
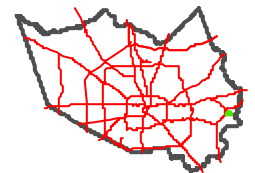


Looking west down West Main Street,  
The buildings are on the former school land  
The two trees are on the edge of the land

# Harris County Appraisal District

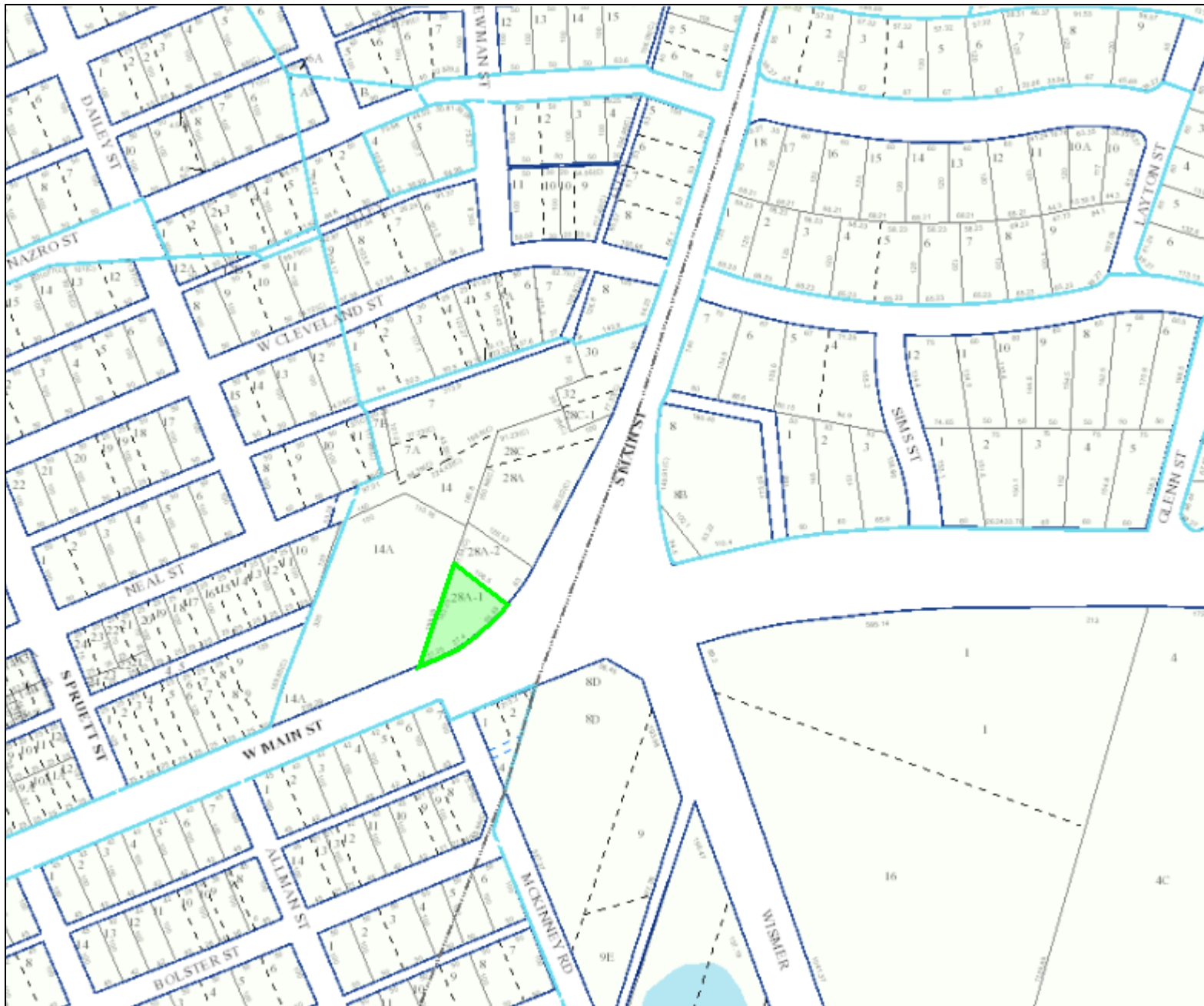


Geospatial or map data maintained by the Harris County Appraisal District is for informational purposes and may not have been prepared for or be suitable for legal, engineering, or surveying purposes. It does **not** represent an on-the-ground survey and only represents the approximate location of property boundaries.



0 55 110 220 Feet

Date: 10/23/2019



**Proposed Marker Location**

HARRIS COUNTY APPRAISAL DISTRICT  
 REAL PROPERTY ACCOUNT INFORMATION  
**0451440050302**

Tax Year: 2020



| Owner and Property Information |                                     |                |             |           |  |                   |              |              |           |                        |   |  |
|--------------------------------|-------------------------------------|----------------|-------------|-----------|--|-------------------|--------------|--------------|-----------|------------------------|---|--|
| Owner Name & Mailing Address:  |                                     |                |             |           | <b>MEREDITH RANDY D</b><br><b>1319 S MAIN ST</b><br><b>BAYTOWN TX 77520-7165</b> |                   |              |              |           |                        | Legal Description: <b>TR 28A-1</b><br><b>ABST 840 H WHITING</b><br>Property Address: <b>1319 S MAIN ST</b><br><b>BAYTOWN TX 77520</b> |  |
| State Class Code               | Land Use Code                       | Building Class | Total Units | Land Area | Building Area  | Net Rentable Area | Neighborhood | Market Area  | Map Facet | Key Map <sup>1/2</sup> |   |  |
| F1 -- Real, Commercial         | 8001 -- Land Neighborhood Section 1 | E              | 0           | 9,932 SF  | 1,464  | 0                 | 9454.02      | 5014 -- East | 6356B     | 541B                   |   |  |

| Value Status Information |            |
|--------------------------|------------|
| Value Status             | Shared CAD |
| All Values Pending       | No         |

| Exemptions and Jurisdictions |           |                       |                 |            |           |           |
|------------------------------|-----------|-----------------------|-----------------|------------|-----------|-----------|
| Exemption Type               | Districts | Jurisdictions         | Exemption Value | ARB Status | 2019 Rate | 2020 Rate |
| None                         | 016       | GOOSE CREEK CISD      | Pending         | Pending    | 1.354280  |           |
|                              | 040       | HARRIS COUNTY         | Pending         | Pending    | 0.407130  |           |
|                              | 041       | HARRIS CO FLOOD CNTRL | Pending         | Pending    | 0.027920  |           |
|                              | 042       | PORT OF HOUSTON AUTHY | Pending         | Pending    | 0.010740  |           |
|                              | 043       | HARRIS CO HOSP DIST   | Pending         | Pending    | 0.165910  |           |
|                              | 044       | HARRIS CO EDUC DEPT   | Pending         | Pending    | 0.005000  |           |
|                              | 046       | LEE JR COLLEGE DIST   | Pending         | Pending    | 0.230100  |           |
|                              | 051       | CITY OF BAYTOWN       | Pending         | Pending    | 0.802030  |           |

Texas law prohibits us from displaying residential photographs, sketches, floor plans, or information indicating the age of a property owner on our website. You can inspect this information or get a copy at [HCAD's information center at 13013 NW Freeway.](#)

| Valuations                  |               |               |                             |                |                |
|-----------------------------|---------------|---------------|-----------------------------|----------------|----------------|
| Value as of January 1, 2019 |               |               | Value as of January 1, 2020 |                |                |
|                             | Market        | Appraised     |                             | Market         | Appraised      |
| Land                        | 18,597        |               | Land                        |                |                |
| Improvement                 | 11,403        |               | Improvement                 |                |                |
| <b>Total</b>                | <b>30,000</b> | <b>30,000</b> | <b>Total</b>                | <b>Pending</b> | <b>Pending</b> |

| Land              |                                     |           |           |       |             |             |                 |                   |           |            |                |         |
|-------------------|-------------------------------------|-----------|-----------|-------|-------------|-------------|-----------------|-------------------|-----------|------------|----------------|---------|
| Market Value Land |                                     |           |           |       |             |             |                 |                   |           |            |                |         |
| Line              | Description                         | Site Code | Unit Type | Units | Size Factor | Site Factor | Appr O/R Factor | Appr O/R Reason   | Total Adj | Unit Price | Adj Unit Price | Value   |
| 1                 | 8001 -- Land Neighborhood Section 1 | 4332      | SF        | 7,432 | 1.00        | 1.00        | 1.00            | --                | 1.00      | Pending    | Pending        | Pending |
| 2                 | 8001 -- Land Neighborhood Section 1 | 4332      | SF        | 2,500 | 1.00        | 1.00        | 0.25            | Restr or Non-Conf | 0.25      | Pending    | Pending        | Pending |

| Building |            |                     |                       |         |            |                  |
|----------|------------|---------------------|-----------------------|---------|------------|------------------|
| Building | Year Built | Type                | Style                 | Quality | Impr Sq Ft | Building Details |
| 1        | 1920       | Auto Service Garage | Service Repair Garage | Low     | 1,464      | Displayed        |

Building Details (1)

| Building Data |        |
|---------------|--------|
| Element       | Detail |
| Cooling Type  | None   |

| Building Areas       |      |
|----------------------|------|
| Description          | Area |
| CNPY ROOF W/ SLAB -C | 384  |

|                         |                        |
|-------------------------|------------------------|
| Functional Utility      | Poor                   |
| Heating Type            | None                   |
| Partition Type          | Below Normal           |
| Physical Condition      | Poor                   |
| Plumbing Type           | Minimum                |
| Sprinkler Type          | None                   |
| Exterior Wall           | Brick / Stone          |
| Economic Obsolescence   | Fair                   |
| Market Index Adjustment | 100% No Mkt Adjustment |
| Element                 | Units                  |
| Wall Height             | 11                     |
| OH Door: Wood / Mtl     | 1                      |
| Interior Finish Percent | 100                    |

|               |       |
|---------------|-------|
| BASE AREA PRI | 1,464 |
|---------------|-------|

**Extra Features**

| Line | Description          | Quality | Condition | Units  | Year Bult |
|------|----------------------|---------|-----------|--------|-----------|
| 1    | CANOPY ROOF AND SLAB | Average | Poor      | 600.00 | 1980      |