

1	8	15	22	29	36	43	50	57	64
2	9	16	23	30	37	44	51	58	65
3	10	17	24	31	38	45	52	59	66
4	11	18	25	32	39	46	53	60	67
5	12	19	26	33	40	47	54	61	68
6	13	20	27	34	41	48	55	62	69
7	14	21	28	35	42	49	56	63	70

80	100
81	101
82	102
83	103
84	104
85	105

72	81
73	82
74	83
75	84
76	85

64	51
65	52
66	53

49	50
----	----

143	163
144	164
145	165
146	166
147	167
148	168
149	169
150	170
151	171

1	12	21	30	41	52	63	74	85	95	105
2	13	22	31	42	53	64	75	86	96	106
3	14	23	32	43	54	65	76	87	97	107
4	15	24	33	44	55	66	77	88	98	108
5	16	25	34	45	56	67	78	89	99	109
6	17	26	35	46	57	68	79	90	100	110
7	18	27	36	47	58	69	80	91	101	111
8	19	28	37	48	59	70	81	92	102	112
9	20	29	38	49	60	71	82	93	103	113
10	21	28	39	50	61	72	83	94	104	114
11	20	29	40	51	62	73	84			

62	73
63	74
64	75
65	76
66	77
67	78
68	79
69	80
70	81
71	82
72	83

41	51
42	52
43	53
44	54
45	55
46	56
47	57
48	58
49	59
50	60

21	31
22	32
23	33
24	34
25	35
26	36
27	37
28	38
29	39
30	40

1	11
2	12
3	13
4	14
5	15
6	16
7	17
8	18
9	19
10	20

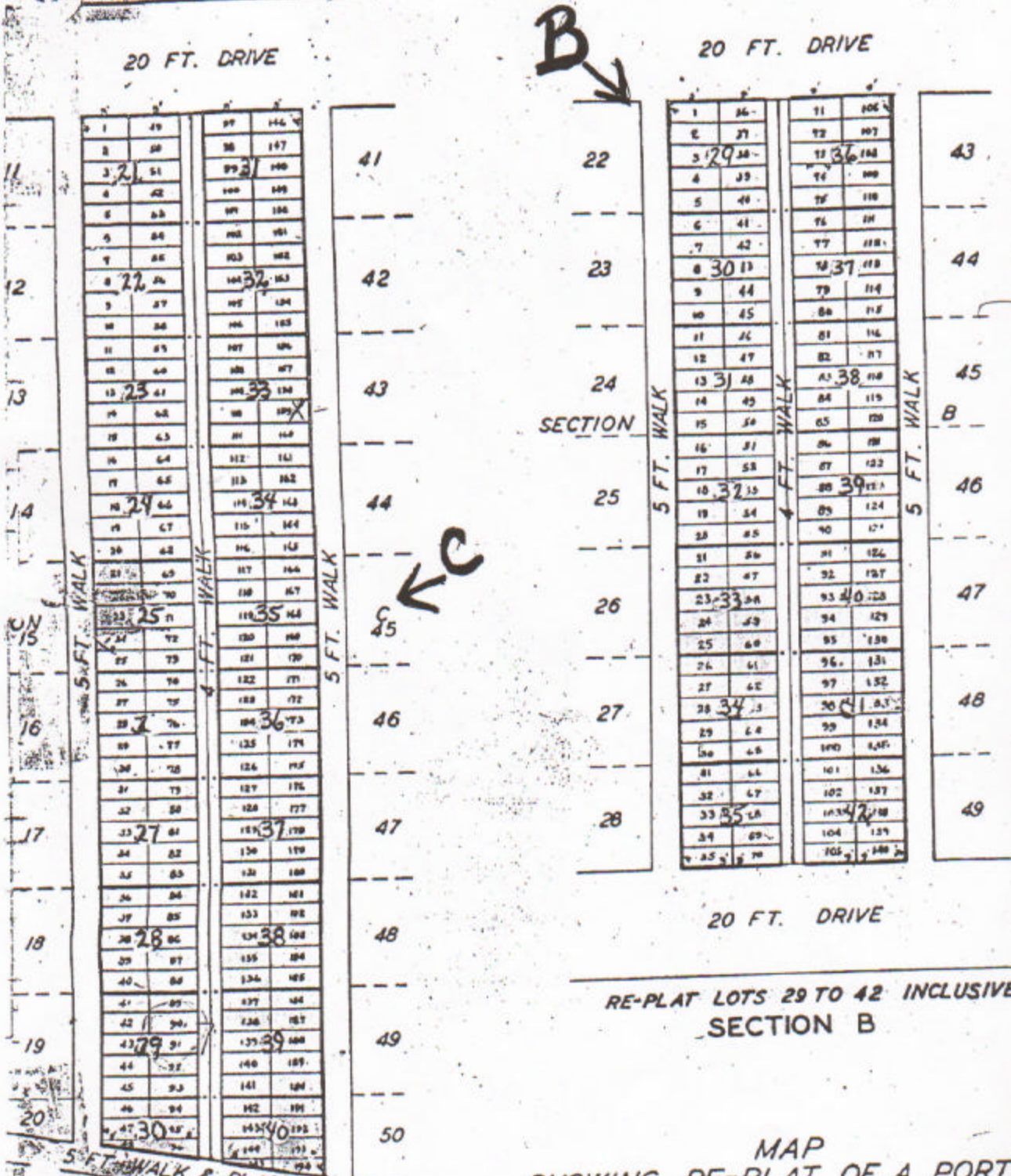
MARKET STREET

Hill Of Rest Cemetery

(For Instrument see Volume 998, Page 679, Deed Record
 Filed for record Jan. 4, 1940 at 9.25 o'clock A.M. Recorded Jan. 5,
Henry H. Sudley Clerk County Court, Harris County, Texas. By *H*

SECTION A

SECTION A



RE-PLAT LOTS 29 TO 42 INCLUSIVE
 SECTION B

MAP
 SHOWING RE-PLAT OF A PORTION OF
 HILL OF REST CEMETERY, OUT OF THE WIG
 ESTATE PROPERTY, WM. SCOTT LG. HARRI
 OFFICE OF J. S. BOYLES C.E. HOUSTON
 SCALE 20' TO 1" DATE 5-15-3